



Order: (888)-282-5810 (Phone)  
(818)-707-0392 (Fax)  
[order@abiocode.com](mailto:order@abiocode.com)  
Web: [www.Abiocode.com](http://www.Abiocode.com)

---

## **SRC (N) Antibody, Rabbit Polyclonal**

**Cat#: R0223-1**

**Quantity: 100 ul**

**Predicted M.W.: 60 kDa**

**Lot#: Refer to vial**

**Application: WB**

**Uniprot ID: P12931**

### **Background:**

SRC is a proto-oncogene highly similar to the v-src gene of Rous sarcoma virus. SRC is a non-receptor protein tyrosine kinase that plays pivotal roles in numerous cellular processes, such as embryonic development, cell proliferation, migration, and transformation. In concert with PTK2B, SRC also plays an important role in osteoclastic bone resorption. The activity of SRC can be inhibited by phosphorylation by c-SRC kinase. Mutations in this gene may be involved in the malignant progression of colon cancer.

### **Other Names:**

Proto-oncogene tyrosine-protein kinase Src, Proto-oncogene c-Src, pp60c-src, p60-SRC, SRC1, v-src sarcoma (Schmidt-Ruppin A-2) viral oncogene homolog (avian), ASV

### **Source and Purity:**

Rabbit polyclonal antibodies were produced by immunizing animals with a GST-fusion protein containing the N-terminal region of human SRC. Antibodies were purified by affinity purification using immunogen.

### **Storage Buffer and Condition:**

Supplied in 1 x PBS (pH 7.4), 100 ug/ml BSA, 40% Glycerol, 0.01% NaN<sub>3</sub>. Store at -20 °C. Stable for 6 months from date of receipt.

### **Species Specificity:**

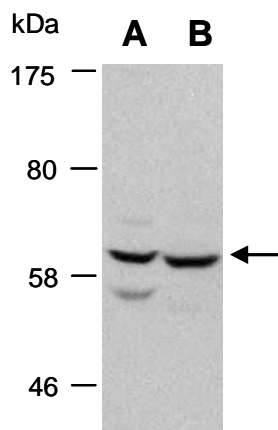
Human, Mouse

### **Tested Applications:**

WB: 1:1,000-1:5,000 (detect endogenous protein\*)

\*: The apparent protein size on WB may be different from the calculated M.W. due to modifications.

**Product Data:**



**Fig 1.** Western blot of total cell extracts from (A) mouse MEF, (B) human A431, using Ab (R0223-1) at RT for 2 h.