



Order: (888)-282-5810 (Phone)
(818)-707-0392 (Fax)
order@abiocode.com
Web: www.Abiocode.com

EHMT2 (M) Antibody, Rabbit Polyclonal

Cat#: R0438-3

Quantity: 100 ul

Predicted M.W.: 132 kDa

Lot#: Refer to vial

Application: WB

Uniprot ID: Q96KQ7

Background:

Euchromatic histone-lysine N-methyltransferase 2 (EHMT2) belongs to the histone-lysine methyltransferase family, Suvar3-9 subfamily. EHMT2 specifically mono- and dimethylates 'Lys-9' of histone H3 (H3K9me1 and H3K9me2, respectively) in euchromatin. H3K9me represents a specific tag for epigenetic transcriptional repression by recruiting HP1 proteins to methylated histones. EHMT2 also weakly methylates 'Lys-27' of histone H3 (H3K27me). In addition, EHMT2 is required for DNA methylation, which is independent of its histone methyltransferase activity. Furthermore, EHMT2 methylates non-histone proteins, including p53/TP53, CDYL, WIZ, ACIN1, DNMT1, HDAC1, ERCC6, KLF12 and itself.

Other Names:

Histone-lysine N-methyltransferase EHMT2, Euchromatic histone-lysine N-methyltransferase 2, HLA-B-associated transcript 8, Histone H3-K9 methyltransferase 3, H3-K9-HMTase 3, Lysine N-methyltransferase 1C, Protein G9a, BAT8, C6orf30, G9A, KMT1C, NG36

Source and Purity:

Rabbit polyclonal antibodies were produced by immunizing animals with a GST-fusion protein containing the middle region of human EHMT2. Antibodies were purified by affinity purification using immunogen.

Storage Buffer and Condition:

Supplied in 1 x PBS (pH 7.4), 100 ug/ml BSA, 40% Glycerol, 0.01% NaN₃. Store at -20 °C. Stable for 6 months from date of receipt.

Species Specificity:

Human

Tested Applications:

WB: 1:1,000-1:5,000 (detect endogenous protein*)

*: The apparent protein size on WB may be different from the calculated M.W. due to modifications.

**For research use only. Not for therapeutic or diagnostic purposes.
Abiocode, Inc., 29397 Agoura Rd., Ste 106, Agoura Hills, CA 91301**



Order: (888)-282-5810 (Phone)
(818)-707-0392 (Fax)
order@abiocode.com
Web: www.Abiocode.com

Product Data:

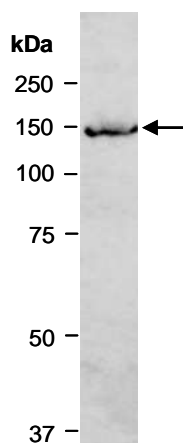


Fig 1. Western blot of total cell extracts from human HeLa, using Ab (R0438-3) at RT for 2 h.

Last Update: 11/2011

**For research use only. Not for therapeutic or diagnostic purposes.
Abiocode, Inc., 29397 Agoura Rd., Ste 106, Agoura Hills, CA 91301**