



Order: (888)-282-5810 (Phone)
(818)-707-0392 (Fax)
order@abiocode.com
Web: www.Abiocode.com

CTLA4 (C) Antibody, Rabbit Polyclonal

Cat#: R0468-2

Quantity: 100 ul

Predicted M.W.: 25 kDa

Lot#: Refer to vial

Application: WB

Uniprot ID: P16410

Background:

Cytotoxic T-lymphocyte protein 4 (CTLA4) is a single-pass type I membrane protein, and it exists as a disulfide-linked homodimer. CTLA4 is an inhibitory receptor acting as a major negative regulator of T-cell responses. The affinity of CTLA4 for its natural B7 family ligands, CD80 and CD86, is considerably stronger than the affinity of their cognate stimulatory co-receptor CD28. Genetic variations in CTLA4 are associated with susceptibility to several autoimmune disorders, including systemic lupus erythematosus (SLE), graves disease, diabetes mellitus insulin-dependent type 2 (IDDM2) and celiac disease type 3 (CELIAC3).

Other Names:

Cytotoxic T-lymphocyte protein 4, Cytotoxic T-lymphocyte-associated antigen 4, CTLA-4, CD152

Source and Purity:

Rabbit polyclonal antibodies were produced by immunizing animals with a GST-fusion protein containing the C-terminal region of human CTLA4. Antibodies were purified by affinity purification using immunogen.

Storage Buffer and Condition:

Supplied in 1 x PBS (pH 7.4), 100 ug/ml BSA, 40% Glycerol, 0.01% NaN₃. Store at -20 °C. Stable for 6 months from date of receipt.

Species Specificity:

Human, Mouse

Tested Applications:

WB: 1:1,000-1:5,000 (detect endogenous protein*)

*: The apparent protein size on WB may be different from the calculated M.W. due to modifications.

Product Data:

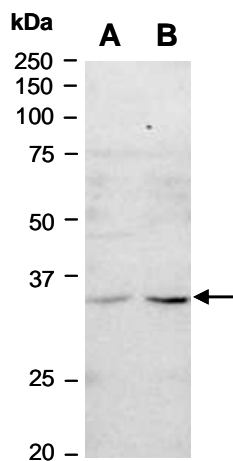


Fig 1. Western blot of total cell extracts from (A) human Jurkat, (B) mouse thymus, using Ab (R0468-2) at RT for 2 h.