



Order: (888)-282-5810 (Phone)
(818)-707-0392 (Fax)
order@abiocode.com
Web: www.Abiocode.com

KDM6A (vPair™) Antibodies

Cat#: R0225-vp

Lot#: Refer to vial

Predicted M.W.: 154 kDa

Uniprot ID: O15550

Application: WB

Quantity: 50 ul KDM6A (N1) (R0225-1) Rabbit Polyclonal Antibody &
50 ul KDM6A (N2) (R0225-2) Rabbit Polyclonal Antibody

Product Introduction:

vPair™ antibodies represent a pair of fully characterized antibodies that recognize two different regions of a target protein. The product is developed by Abiocode to address whether the signal observed truly represents the protein of interest, an often encountered issue in antibody-based assays. The use of a pair of fully characterized vPair™ antibodies in the same assay can validate signal specificity since vPair™ antibodies recognize two independent epitopes of the same protein. Different sets of vPair™ antibodies are developed at Abiocode to work with specific applications, including antibody arrays, Western blot, IP-Western, ChIP, IHC, and FACS.

Background:

Lysine-specific demethylase 6A (KDM6A) is a histone demethylase that specifically demethylates 'Lys-27' of histone H3, thereby playing a central role in histone code. KDM6A can demethylate trimethylated and dimethylated but not monomethylated H3 'Lys-27', and it plays a central role in the regulation of posterior development by regulating HOX gene expression. KDM6A also regulates the recruitment of the PRC1 complex and monoubiquitination of histone H2A.

Other Names:

Lysine-specific demethylase 6A, Histone demethylase UTX, Ubiquitously-transcribed TPR protein on the X chromosome, Ubiquitously-transcribed X chromosome tetratricopeptide repeat protein, UTX

Source and Purity:

Rabbit polyclonal antibodies were produced by immunizing animals with a GST-fusion protein containing the N-terminal region of human KDM6A, which is distinct from the antigen for KDM6A (N1) (R0225-1). Antibodies were purified by affinity purification using immunogen.

Storage Buffer and Condition:

Supplied in 1 x PBS (pH 7.4), 100 ug/ml BSA, 40% Glycerol, 0.01% NaN₃. Store at -20 °C. Stable for 6 months from date of receipt.

**For research use only. Not for therapeutic or diagnostic purposes.
Abiocode, Inc., 29397 Agoura Rd., Ste 106, Agoura Hills, CA 91301**



Order: (888)-282-5810 (Phone)
(818)-707-0392 (Fax)
order@abiocode.com
Web: www.Abiocode.com

Species Specificity:

Human

Tested Applications:

WB: 1:1,000-1:5,000 (detect endogenous protein*)

*: The apparent protein size on WB may be different from the calculated M.W. due to modifications.

Product Data:

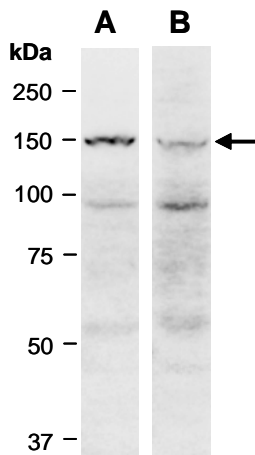


Fig 1. Western blot of total cell extracts from human HeLa, using 2 independent antibodies against 2 distinct N-terminal regions of human KDM6A (A: R225-1; B: R0225-2) at RT for 2 h.

Last Update: 08/2011

For research use only. Not for therapeutic or diagnostic purposes.
Abiocode, Inc., 29397 Agoura Rd., Ste 106, Agoura Hills, CA 91301