



Order: (888)-282-5810 (Phone)  
(818)-707-0392 (Fax)  
[order@abiocode.com](mailto:order@abiocode.com)  
Web: [www.Abiocode.com](http://www.Abiocode.com)

---

## **BCL6B (N) Antibody, Rabbit Polyclonal**

**Cat#:** R0272-1

**Quantity:** 100 ul

**Predicted M.W.:** 51 kDa

**Lot#:** Refer to vial

**Application:** WB

**Uniprot ID:** O88282

### **Background:**

B-cell CLL/lymphoma 6 member B protein (BCL6B) is a nuclear protein induced in activated lymphocytes and acts as a sequence-specific transcriptional repressor in association with BCL6. BCL6B is necessary for activation of naive T-cells to antigenic stimulation. It may attenuate the regulatory effect of BCL6 on antigenic activation of naive CD4 T-cells by forming a heterodimer with BCL6.

### **Other Names:**

B-cell CLL/lymphoma 6 member B protein, Bcl6-associated zinc finger protein, Bazf

### **Source and Purity:**

Rabbit polyclonal antibodies were produced by immunizing animals with a GST-fusion protein containing the N-terminal region of mouse BCL6B. Antibodies were purified by affinity purification using immunogen.

### **Storage Buffer and Condition:**

Supplied in 1 x PBS (pH 7.4), 100 ug/ml BSA, 40% Glycerol, 0.01% NaN<sub>3</sub>. Store at -20 °C. Stable for 6 months from date of receipt.

### **Species Specificity:**

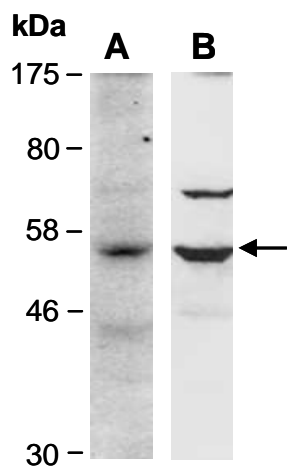
Mouse

### **Tested Applications:**

WB: 1:1,000-1:5,000 (detect endogenous protein\*)

\*: The apparent protein size on WB may be different from the calculated M.W. due to modifications.

**Product Data:**



**Fig 1.** Western blot of total cell extracts from mouse liver, using 2 independent antibodies against 2 distinct regions of mouse BCL6B (A: R0272-1, N-terminal; B: R0272-3, C-terminal) at RT for 2 h.