



Order: (888)-282-5810 (Phone)
(818)-707-0392 (Fax)
order@abiocode.com
Web: www.Abiocode.com

SMARCB1 (N) Antibody, Rabbit Polyclonal

Cat#: R0430-1

Quantity: 100 ul

Predicted M.W.: 44 kDa

Lot#: Refer to vial

Application: WB

Uniprot ID: Q12824

Background:

SWI/SNF-related matrix-associated actin-dependent regulator of chromatin subfamily B member 1 (SMARCB1) is a nuclear protein and a core component of the BAF (hSWI/SNF) complex. This ATP-dependent chromatin-remodeling complex plays important roles in cell proliferation and differentiation, cellular antiviral activities and inhibition of tumor formation. The BAF (hSWI/SNF) complex relieves repressive chromatin structures, allowing the transcriptional machinery to access its targets more effectively. SMARCB1 may also bind to and enhance the DNA joining activity of HIV-1 integrase. SMARCB1 has been implicated as a tumor suppressor, and mutations in it have been associated with malignant rhabdoid tumors.

Other Names:

SWI/SNF-related matrix-associated actin-dependent regulator of chromatin subfamily B member 1, BRG1-associated factor 47, BAF47, Integrase interactor 1 protein, SNF5 homolog, hSNF5, BAF47, INI1, SNF5L1

Source and Purity:

Rabbit polyclonal antibodies were produced by immunizing animals with a GST-fusion protein containing the N-terminal region of human SMARCB1. Antibodies were purified by affinity purification using immunogen.

Storage Buffer and Condition:

Supplied in 1 x PBS (pH 7.4), 100 ug/ml BSA, 40% Glycerol, 0.01% NaN₃. Store at -20 °C. Stable for 6 months from date of receipt.

Species Specificity:

Human

Tested Applications:

WB: 1:1,000-1:5,000 (detect endogenous protein*)

*: The apparent protein size on WB may be different from the calculated M.W. due to modifications.

For research use only. Not for therapeutic or diagnostic purposes.
Abiocode, Inc., 29397 Agoura Rd., Ste 106, Agoura Hills, CA 91301



Order: (888)-282-5810 (Phone)
(818)-707-0392 (Fax)
order@abiocode.com
Web: www.Abiocode.com

Product Data:

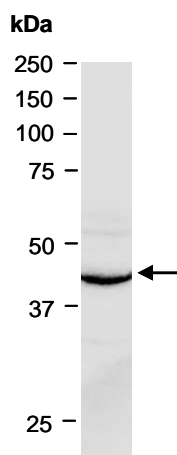


Fig 1. Western blot of nuclear extracts from human HeLa, using Ab (R0430-1) at RT for 2 h.

Last Update: 11/2011

For research use only. Not for therapeutic or diagnostic purposes.
Abiocode, Inc., 29397 Agoura Rd., Ste 106, Agoura Hills, CA 91301