



Order: (888)-282-5810 (Phone)
(818)-707-0392 (Fax)
order@abiocode.com
Web: www.Abiocode.com

FZD8 (N) Antibody, Rabbit Polyclonal

Cat#: R0265-2

Quantity: 100 ul

Predicted M.W.: 73 kDa

Lot#: Refer to vial

Application: WB

Uniprot ID: Q9H461

Background:

Frizzled-8 (FZD8) is a receptor for Wnt proteins, which belongs to the G-protein coupled receptor Fz/Smo family. FZD8 is a component of the Wnt-Fzd-LRP5-LRP6 complex that triggers beta-catenin signaling through inducing aggregation of receptor-ligand complexes into ribosome-sized signalosomes. The beta-catenin canonical signaling pathway leads to the activation of disheveled proteins, inhibition of GSK-3 kinase, nuclear accumulation of beta-catenin and activation of Wnt target genes. A second signaling pathway involving PKC and calcium fluxes has been seen for some family members. FZD8 may be involved in transduction and intercellular transmission of polarity information during tissue morphogenesis and/or in differentiated tissues.

Other Names:

Frizzled-8, Fz-8, hFz8

Source and Purity:

Rabbit polyclonal antibodies were produced by immunizing animals with a GST-fusion protein containing the N-terminal region of human FZD8. Antibodies were purified by affinity purification using immunogen.

Storage Buffer and Condition:

Supplied in 1 x PBS (pH 7.4), 100 ug/ml BSA, 40% Glycerol, 0.01% NaN₃. Store at -20 °C. Stable for 6 months from date of receipt.

Species Specificity:

Human

Tested Applications:

WB: 1:1,000-1:5,000 (detect endogenous protein*)

*: The apparent protein size on WB may be different from the calculated M.W. due to modifications.

Product Data:

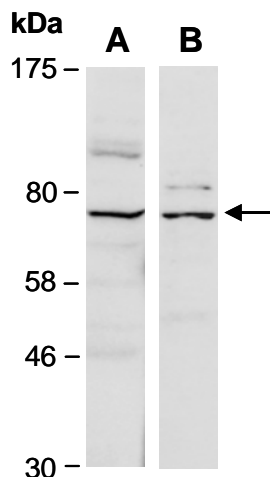


Fig 1. Western blot of total cell extracts from human MCF7, using 2 independent Abs against 2 distinct regions of human FZD8 [A: R0265-1 (middle); B: R0265-2 (N-terminal)] at RT for 2 h.