



Order: (888)-282-5810 (Phone)  
(818)-707-0392 (Fax)  
[order@abiocode.com](mailto:order@abiocode.com)  
Web: [www.Abiocode.com](http://www.Abiocode.com)

---

## IL13RA2 (C) Antibody, Rabbit Polyclonal

**Cat#:** R0948-2

**Quantity:** 100 ul

**Predicted M.W.:** 44 kDa

**Lot#:** Refer to vial

**Application:** WB

**Uniprot ID:** Q14627

### **Background:**

Interleukin-13 receptor subunit alpha-2 (IL13RA2) is closely related to IL13RA1, a subunit of the interleukin 13 receptor complex. This protein binds to IL13 as a monomer with high affinity, but lacks cytoplasmic domain, and does not appear to function as a signal mediator. It is reported to play a role in the internalization of IL13.

### **Other Names:**

Interleukin-13 receptor subunit alpha-2, IL-13 receptor subunit alpha-2, IL-13R subunit alpha-2, IL-13R-alpha-2, IL-13RA2, Interleukin-13-binding protein, CD213a2, IL13R

### **Source and Purity:**

Rabbit polyclonal antibodies were produced by immunizing animals with a GST-fusion protein containing the C-terminal region of human IL13RA2. Antibodies were purified by affinity purification using immunogen.

### **Storage Buffer and Condition:**

Supplied in 1 x PBS (pH 7.4), 100 ug/ml BSA, 40% Glycerol, 0.01% NaN<sub>3</sub>. Store at -20 °C. Stable for 6 months from date of receipt.

### **Species Specificity:**

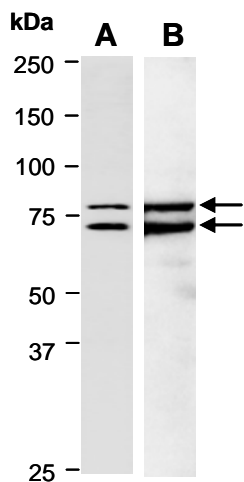
Human

### **Tested Applications:**

WB: 1:1,000-1:5,000 (detect endogenous protein\*)

\*: The apparent protein size on WB may be different from the calculated M.W. due to modifications.

**Product Data:**



**Fig 1.** Western blot of total cell extracts from (A) human HeLa, (B) human HepG2, using Ab (R0948-2) at RT for 2 h.