



Order: (888)-282-5810 (Phone)  
(818)-707-0392 (Fax)  
[order@abiocode.com](mailto:order@abiocode.com)  
Web: [www.Abiocode.com](http://www.Abiocode.com)

---

## **ZFP161 (C) Antibody, Rabbit Polyclonal**

**Cat#: R1063-2**

**Quantity: 100 ul**

**Predicted M.W.: 149 kDa**

**Lot#: Refer to vial**

**Application: WB**

**Uniprot ID: P46934**

### **Background:**

Zinc finger protein 161 homolog (ZFP161) belongs to the krueppel C2H2-type zinc-finger protein family involved in transcriptional regulation. ZFP161 is a transcriptional repressor of MYC and thymidine kinase promoters, while a transcriptional activator of the dopamine transporter (DAT) gene, binding it's promoter at the consensus sequence 5'-CCTGCACAGTTCACGGA-3'.

### **Other Names:**

Zinc finger protein 161 homolog, Zfp-161, Zinc finger and BTB domain-containing protein 14, Zinc finger protein 478, Zinc finger protein 5 homolog, ZF5, Zfp-5, hZF5, ZBTB14, ZNF478

### **Source and Purity:**

Rabbit polyclonal antibodies were produced by immunizing animals with a GST-fusion protein containing the C-terminal region of human ZFP161. Antibodies were purified by affinity purification using immunogen.

### **Storage Buffer and Condition:**

Supplied in 1 x PBS (pH 7.4), 100 ug/ml BSA, 40% Glycerol, 0.01% NaN<sub>3</sub>. Store at -20 °C. Stable for 6 months from date of receipt.

### **Species Specificity:**

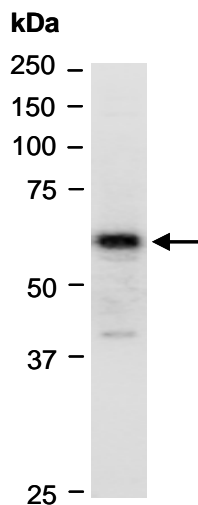
Human

### **Tested Applications:**

WB: 1:1,000-1:5,000 (detect endogenous protein\*)

\*: The apparent protein size on WB may be different from the calculated M.W. due to modifications.

**Product Data:**



**Fig 1.** Western blot of total cell extracts from human HeLa, using Ab (R1063-2) at RT for 2 h.