



Order: (888)-282-5810 (Phone)  
(818)-707-0392 (Fax)  
[order@abiocode.com](mailto:order@abiocode.com)  
Web: [www.Abiocode.com](http://www.Abiocode.com)

---

## **KDM4DL (C1) Antibody, Rabbit Polyclonal**

**Cat#: R0910-2**

**Quantity: 100 ul**

**Predicted M.W.: 57 kDa**

**Lot#: Refer to vial**

**Application: WB**

**Uniprot ID: B2RXH2**

### **Background:**

Lysine-specific demethylase 4D-like (KDM4DL) is a nuclear protein that belongs to the JHDM3 histone demethylase family. KDM4DL is a probable histone demethylase, which can demethylate Lys residue and generate formaldehyde and succinate. KDM4DL binds one Fe<sup>2+</sup> ion per subunit and may be involved in DNA binding and transcriptional regulation.

### **Other Names:**

Lysine-specific demethylase 4D-like, KDM4D-like protein

### **Source and Purity:**

Rabbit polyclonal antibodies were produced by immunizing animals with a GST-fusion protein containing the C-terminal region of human KDM4DL. Antibodies were purified by affinity purification using immunogen.

### **Storage Buffer and Condition:**

Supplied in 1 x PBS (pH 7.4), 100 ug/ml BSA, 40% Glycerol, 0.01% NaN<sub>3</sub>. Store at -20 °C. Stable for 6 months from date of receipt.

### **Species Specificity:**

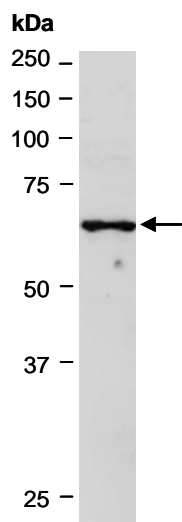
Human

### **Tested Applications:**

WB: 1:1,000-1:5,000 (detect endogenous protein\*)

\*: The apparent protein size on WB may be different from the calculated M.W. due to modifications.

**Product Data:**



**Fig 1.** Western blot of total cell extracts from human HeLa, using Ab (R0910-2) at RT for 2 h.