



Order: (888)-282-5810 (Phone)
(818)-707-0392 (Fax)
order@abiocode.com
Web: www.Abiocode.com

SREBP1 (N) Antibody, Rabbit Polyclonal

Cat#: R0172-1

Quantity: 100 ul

Predicted M.W.: 122 kDa

Lot#: Refer to vial

Application: WB

Uniprot ID: P36956

Background:

Sterol regulatory element-binding protein 1 (SREBP1) is a member of the basic helix-loop-helix-leucine zipper (bHLH-Zip) transcription factor family, which is required for lipid homeostasis. SREBP1 regulates transcription of the LDL receptor gene as well as the fatty acid and to a lesser degree the cholesterol synthesis pathway. SREBP1 binds to the sterol regulatory element 1 (SRE-1) (5'-ATCACCCCAC-3'), and it has dual sequence specificity binding to both an E-box motif (5'-ATCACGTGA-3') and to SRE-1 (5'-ATCACCCCAC-3').

Other Names:

Sterol regulatory element-binding protein 1, Class D basic helix-loop-helix protein 1, bHLHd1, Sterol regulatory element-binding transcription factor 1, SREBF1, BHLHD1, SREBP-1

Source and Purity:

Rabbit polyclonal antibodies were produced by immunizing animals with a GST-fusion protein containing the N-terminal region of human SREBP1. Antibodies were purified by affinity purification using immunogen.

Storage Buffer and Condition:

Supplied in 1 x PBS (pH 7.4), 100 ug/ml BSA, 40% Glycerol, 0.01% NaN₃. Store at -20 °C. Stable for 6 months from date of receipt.

Species Specificity:

Human, Mouse

Tested Applications:

WB: 1:1,000-1:5,000 (detect endogenous protein*)

*: The apparent protein size on WB may be different from the calculated M.W. due to modifications.

Product Data:

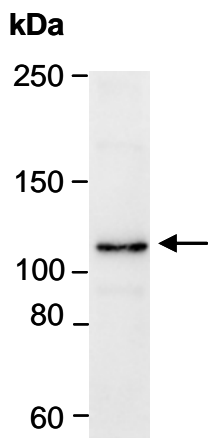


Fig 1. Western blot of total cell extracts from mouse MEF, using Ab (R0172-1) at RT for 2 h.