



Order: (888)-282-5810 (Phone)  
(818)-707-0392 (Fax)  
[order@abiocode.com](mailto:order@abiocode.com)  
Web: [www.Abiocode.com](http://www.Abiocode.com)

---

## **MEIS1 (N1) Antibody, Rabbit Polyclonal**

**Cat#: R0745-1**

**Quantity: 100 ul**

**Predicted M.W.: 43 kDa**

**Lot#: Refer to vial**

**Application: WB**

**Uniprot ID: O00470**

### **Background:**

Homeobox genes play crucial roles in normal development and neoplasia. Myeloid ecotropic viral integration site 1 homolog (MEIS1) is a homeobox protein belonging to the TALE ('three amino acid loop extension')/MEIS homeobox family. MEIS1 contains a homeobox DNA-binding domain and acts as a transcriptional regulator of PAX6. It also acts as a transcriptional activator of PF4 in complex with PBX1 or PBX2. MEIS1 is required for hematopoiesis, megakaryocyte lineage development and vascular patterning. In addition, MEIS1 may function as a cofactor for HOXA7 and HOXA9 in the induction of myeloid leukemias.

### **Other Names:**

Homeobox protein Meis1, myeloid ecotropic viral integration site 1 homolog, leukemogenic homolog protein

### **Source and Purity:**

Rabbit polyclonal antibodies were produced by immunizing animals with a GST-fusion protein containing the N-terminal region of human MEIS1. Antibodies were purified by affinity purification using immunogen.

### **Storage Buffer and Condition:**

Supplied in 1 x PBS (pH 7.4), 100 ug/ml BSA, 40% Glycerol, 0.01% NaN<sub>3</sub>. Store at -20 °C. Stable for 6 months from date of receipt.

### **Species Specificity:**

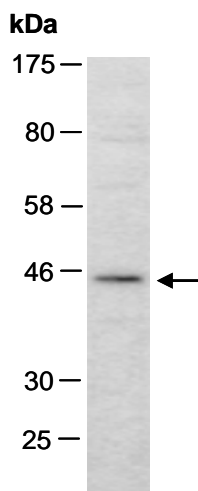
Human

### **Tested Applications:**

WB: 1:500-1:1,000 (detect endogenous protein\*)

\*: The apparent protein size on WB may be different from the calculated M.W. due to modifications.

**Product Data:**



**Fig 1.** Western blot of total cell extracts from human HeLa, using Ab (R0745-1) at RT for 2 h.