



Order: (888)-282-5810 (Phone)  
(818)-707-0392 (Fax)  
[order@abiocode.com](mailto:order@abiocode.com)  
Web: [www.Abiocode.com](http://www.Abiocode.com)

---

## **GRP78 (C) Antibody, Rabbit Polyclonal**

**Cat#: R0705-1**

**Quantity: 100 ul**

**Predicted M.W.: 72 kDa**

**Lot#: Refer to vial**

**Application: WB**

**Uniprot ID: P20029**

### **Background:**

78 kDa glucose-regulated protein (GRP78) belongs to the heat shock protein 70 family. It is localized in the lumen of the endoplasmic reticulum (ER), and is involved in the folding and assembly of proteins in the ER. It is a component of an EIF2 complex. GRP78 is part of a large chaperone multiprotein complex comprising DNAJB11, HSP90B1, HSPA5, HYOU, PDIA2, PDIA4, PDIA6, PPIB, SDF2L1, UGT1A1 and low levels of ERP29. It is an autoantigen in rheumatoid arthritis.

### **Other Names:**

Hspa5, 78 kDa glucose-regulated protein, GRP-78, Heat shock 70 kDa protein 5, Immunoglobulin heavy chain-binding protein, BiP

### **Source and Purity:**

Rabbit polyclonal antibodies were produced by immunizing animals with a GST-fusion protein containing the C-terminal region of mouse GRP78. Antibodies were purified by affinity purification using immunogen.

### **Storage Buffer and Condition:**

Supplied in 1 x PBS (pH 7.4), 100 ug/ml BSA, 40% Glycerol, 0.01% NaN<sub>3</sub>. Store at -20 °C. Stable for 6 months from date of receipt.

### **Species Specificity:**

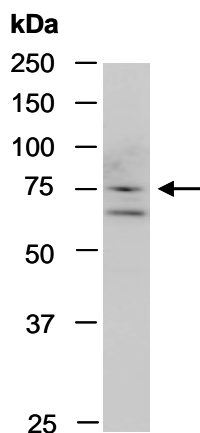
Human, Mouse

### **Tested Applications:**

WB: 1:500-1:1,000 (detect endogenous protein\*)

\*: The apparent protein size on WB may be different from the calculated M.W. due to modifications.

**Product Data:**



**Fig 1.** Western blot of total cell extracts from human HeLa, using Ab (R0705-1) at RT for 2 h.