



Order: (888)-282-5810 (Phone)
(818)-707-0392 (Fax)
order@abiocode.com
Web: www.Abiocode.com

BARD1 (C) Antibody, Rabbit Polyclonal

Cat#: R0876-2

Quantity: 100 ul

Predicted M.W.: 87 kDa

Lot#: Refer to vial

Application: WB

Uniprot ID: Q99728

Background:

BRCA1-associated RING domain protein 1 (BARD1) is a probable E3 ubiquitin-protein ligase and a tumor suppressor. The BRCA1-BARD1 heterodimer specifically mediates the formation of 'Lys-6'-linked polyubiquitin chains and coordinates a diverse range of cellular pathways such as DNA damage repair, ubiquitination and transcriptional regulation to maintain genomic stability. BARD1 plays a central role in the control of the cell cycle in response to DNA damage. It also forms a heterodimer with CSTF1/CSTF-50 to modulate mRNA processing and RNAP II stability by inhibiting pre-mRNA 3' cleavage.

Other Names:

BRCA1-associated RING domain protein 1, BARD-1

Source and Purity:

Rabbit polyclonal antibodies were produced by immunizing animals with a GST-fusion protein containing the C-terminal region of human BARD1. Antibodies were purified by affinity purification using immunogen.

Storage Buffer and Condition:

Supplied in 1 x PBS (pH 7.4), 100 ug/ml BSA, 40% Glycerol, 0.01% NaN₃. Store at -20 °C. Stable for 6 months from date of receipt.

Species Specificity:

Human

Tested Applications:

WB: 1:500-1:1,000 (detect endogenous protein*)

*: The apparent protein size on WB may be different from the calculated M.W. due to modifications.

Product Data:

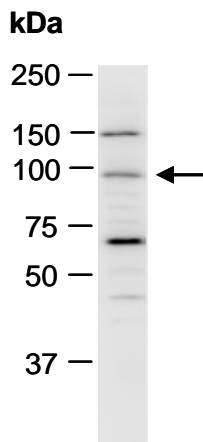


Fig 1. Western blot of total cell extracts from human HeLa, using Ab (R0876-2) at RT for 2 h.