



Order: (888)-282-5810 (Phone)
(818)-707-0392 (Fax)
order@abiocode.com
Web: www.Abiocode.com

DTL (N2) Antibody, Rabbit Polyclonal

Cat#: R0924-2

Quantity: 100 ul

Predicted M.W.: 79 kDa

Lot#: Refer to vial

Application: WB

Uniprot ID: Q9NZJ0

Background:

Denticleless protein homolog (DTL) belongs to the WD repeat cdt2 family. It is a substrate-specific adapter for the DCX (DDB1-CUL4-X-box) E3 ubiquitin-protein ligase complex required for cell cycle control, DNA damage response and translesion DNA synthesis. The DCX(DTL) complex, also named CRL4(CDT2) complex, mediates the polyubiquitination and subsequent degradation of CDT1 and CDKN1A/p21(CIP1). CDT1 degradation in response to DNA damage is necessary to ensure proper cell cycle regulation of DNA replication. CDKN1A/p21(CIP1) degradation during S phase or following UV irradiation is essential to control replication licensing. In undamaged proliferating cells, the DCX(DTL) complex promotes the 'Lys-164' monoubiquitination of PCNA to regulate PCNA-dependent translesion DNA synthesis.

Other Names:

Denticleless protein homolog, CDT2, CDW1, DCAF2, L2DTL, RAMP, DDB1- and CUL4-associated factor 2, Lethal(2) denticleless protein homolog, Retinoic acid-regulated nuclear matrix-associated protein

Source and Purity:

Rabbit polyclonal antibodies were produced by immunizing animals with a GST-fusion protein containing the N-terminal region of human DTL. Antibodies were purified by affinity purification using immunogen.

Storage Buffer and Condition:

Supplied in 1 x PBS (pH 7.4), 100 ug/ml BSA, 40% Glycerol, 0.01% NaN₃. Store at -20 °C. Stable for 6 months from date of receipt.

Species Specificity:

Human

Tested Applications:

WB: 1:500-1:1,000 (detect endogenous protein*)

*: The apparent protein size on WB may be different from the calculated M.W. due to modifications.

For research use only. Not for therapeutic or diagnostic purposes.
Abiocode, Inc., 29397 Agoura Rd., Ste 106, Agoura Hills, CA 91301

Product Data:

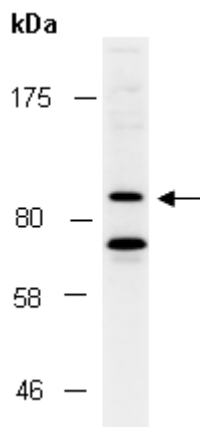


Fig 1. Western blot of total cell extracts from human HeLa, using Ab (R0924-2) at RT for 2 h.