



Order: (888)-282-5810 (Phone)
(818)-707-0392 (Fax)
order@abiocode.com
Web: www.Abiocode.com

MED14 (C) Antibody, Rabbit Polyclonal

Cat#: R0889-2

Quantity: 100 ul

Predicted M.W.: 161 kDa

Lot#: Refer to vial

Application: WB

Uniprot ID: O60244

Background:

Mediator complex subunit 14 (MED14) is a component of the Mediator complex, a coactivator involved in the regulated transcription of nearly all RNA polymerase II-dependent genes. Mediator functions as a bridge to convey information from gene-specific regulatory proteins to the basal RNA polymerase II transcription machinery. Mediator is recruited to promoters by direct interactions with regulatory proteins and serves as a scaffold for the assembly of a functional pre-initiation complex with RNA polymerase II and the general transcription factors.

Other Names:

Mediator of RNA polymerase II transcription subunit 14, Activator-recruited cofactor 150 kDa component, ARC150, Cofactor required for Sp1 transcriptional activation subunit 2, CRSP complex subunit 2, Mediator complex subunit 14, RGR1 homolog, hRGR1, Thyroid hormone receptor-associated protein complex 170 kDa component, Trap170, Transcriptional coactivator CRSP150, Vitamin D3 receptor-interacting protein complex 150 kDa component, CRSP2, CXorf4, DRIP150, EXLM1, RGR1, TRAP170

Source and Purity:

Rabbit polyclonal antibodies were produced by immunizing animals with a GST-fusion protein containing the C-terminal region of human MED14. Antibodies were purified by affinity purification using immunogen.

Storage Buffer and Condition:

Supplied in 1 x PBS (pH 7.4), 100 ug/ml BSA, 40% Glycerol, 0.01% NaN₃. Store at -20 °C. Stable for 6 months from date of receipt.

Species Specificity:

Human

Tested Applications:

WB: 1:500-1:1,000 (detect endogenous protein*)

*: The apparent protein size on WB may be different from the calculated M.W. due to modifications.

For research use only. Not for therapeutic or diagnostic purposes.
Abiocode, Inc., 29397 Agoura Rd., Ste 106, Agoura Hills, CA 91301

Product Data:

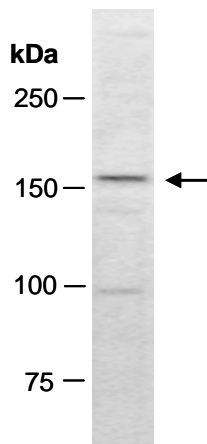


Fig 1. Western blot of total cell extracts from human HeLa, using Ab (R0889-2) at RT for 2 h.