



Order: (888)-282-5810 (Phone)
(818)-707-0392 (Fax)
order@abiocode.com
Web: www.Abiocode.com

RIPK3 (C) Antibody, Rabbit Polyclonal

Cat#: R1316-2

Quantity: 100 ul

Predicted M.W.: 57 kDa

Lot#: Refer to vial

Application: WB

Uniprot ID: Q9Y572

Background:

Receptor-interacting serine/threonine-protein kinase 3 (RIPK3) is a member of the receptor-interacting protein (RIP) family of serine/threonine protein kinases, and contains an N-terminal protein kinase domain and a unique C-terminal domain. RIPK3 is essential for cellular necroptosis in response to TNF-alpha family of death-inducing cytokines. Upon induction of necrosis, RIPK3 interacts with, and phosphorylates RIPK1 to form a necrosis-inducing complex. RIPK3 binds to and enhances the activity of three metabolic enzymes: GLUL, GLUD1, and PYGL. These metabolic enzymes may eventually stimulate the tricarboxylic acid cycle and oxidative phosphorylation, which could result in enhanced ROS production. RIPK3 is predominantly localized to the cytoplasm, and can undergo nucleocytoplasmic shuttling dependent on novel nuclear localization and export signals.

Other Names:

Receptor-interacting serine/threonine-protein kinase 3, RIP-like protein kinase 3, Receptor-interacting protein 3, RIP-3, RIP3

Source and Purity:

Rabbit polyclonal antibodies were produced by immunizing animals with a GST-fusion protein containing the C-terminal region of human RIPK3. Antibodies were purified by affinity purification using immunogen.

Storage Buffer and Condition:

Supplied in 1 x PBS (pH 7.4), 100 ug/ml BSA, 40% Glycerol, 0.01% NaN₃. Store at -20 °C. Stable for 6 months from date of receipt.

Species Specificity:

Human

Tested Applications:

WB: 1:500-1:1,000 (detect endogenous protein*)

*: The apparent protein size on WB may be different from the calculated M.W. due to modifications.

Product Data:

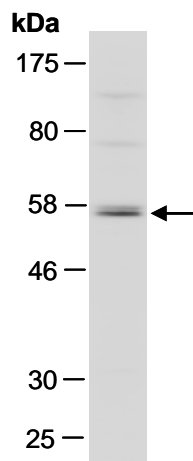


Fig 1. Western blot of total cell extracts from human HeLa, using Ab (R1316-2) at RT for 2 h.