



Order: (888)-282-5810 (Phone)
(818)-707-0392 (Fax)
order@abiocode.com
Web: www.Abiocode.com

MMP16 (C1) Antibody, Rabbit Polyclonal

Cat#: R1025-1

Quantity: 100 ul

Predicted M.W.: 69.5 kDa

Lot#: Refer to vial

Application: WB

Uniprot ID: P51512

Background:

Matrix metalloproteinase-16 (MMP16) is a single-pass type I membrane protein that belongs to the peptidase M10A family. It is an endopeptidase that degrades various components of the extracellular matrix, such as collagen type III and fibronectin, while it has no effect on type I, II, IV and V collagen. MMP16 is involved in the matrix remodeling of blood vessels. MMPs play a central role in cell proliferation, migration, differentiation, angiogenesis, apoptosis and host defences. Dysregulation of MMPs has been implicated in many diseases including arthritis, chronic ulcers, encephalomyelitis and cancer.

Other Names:

Matrix metalloproteinase-16, MMP-16, MMP-X2, Membrane-type matrix metalloproteinase 3, MMPX2, MT-MMP 3, MTMMP3, Membrane-type-3 matrix metalloproteinase, MT3-MMP, MT3MMP

Source and Purity:

Rabbit polyclonal antibodies were produced by immunizing animals with a GST-fusion protein containing the C-terminal region of human MMP16. Antibodies were purified by affinity purification using immunogen.

Storage Buffer and Condition:

Supplied in 1 x PBS (pH 7.4), 100 ug/ml BSA, 40% Glycerol, 0.01% NaN₃. Store at -20 °C. Stable for 6 months from date of receipt.

Species Specificity:

Human

Tested Applications:

WB: 1:500-1:1,000 (detect endogenous protein*)

*: The apparent protein size on WB may be different from the calculated M.W. due to modifications.

Product Data:

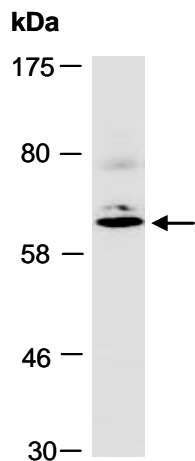


Fig 1. Western blot of total cell extracts from human HeLa, using Ab (R1025-1) at RT for 2 h.