



Order: (888)-282-5810 (Phone)
(818)-707-0392 (Fax)
order@abiocode.com
Web: www.Abiocode.com

MMP20 (C) Antibody, Rabbit Polyclonal

Cat#: R1033-2

Quantity: 100 ul

Predicted M.W.: 54 kDa

Lot#: Refer to vial

Application: WB

Uniprot ID: O60882

Background:

MMP20 is a matrix metalloproteinase belonging to the peptidase M10A family. It degrades amelogenin, the major protein component of the enamel matrix and two of the macromolecules characterizing the cartilage extracellular matrix: aggrecan and the cartilage oligomeric matrix protein (COMP). MMP20 may play a central role in tooth enamel formation. A mutation in the gene resulting in premature termination of the encoded protein has been associated with amelogenesis imperfecta.

Other Names:

Matrix metalloproteinase-20, MMP-20, Enamel metalloproteinase, Enamelysin

Source and Purity:

Rabbit polyclonal antibodies were produced by immunizing animals with a GST-fusion protein containing the C-terminal region of human MMP20. Antibodies were purified by affinity purification using immunogen.

Storage Buffer and Condition:

Supplied in 1 x PBS (pH 7.4), 100 ug/ml BSA, 40% Glycerol, 0.01% NaN₃. Store at -20 °C. Stable for 6 months from date of receipt.

Species Specificity:

Human

Tested Applications:

WB: 1:500-1:1,000 (detect endogenous protein*)

*: The apparent protein size on WB may be different from the calculated M.W. due to modifications.

Product Data:

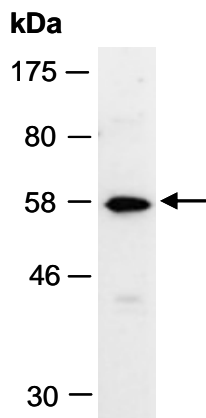


Fig 1. Western blot of total cell extracts from human HeLa, using Ab (R1033-2) at RT for 2 h.