



Order: (888)-282-5810 (Phone)
(818)-707-0392 (Fax)
order@abiocode.com
Web: www.Abiocode.com

ROBO4 (M) Antibody, Rabbit Polyclonal

Cat#: R1056-2

Quantity: 100 ul

Predicted M.W.: 107 kDa

Lot#: Refer to vial

Application: WB

Uniprot ID: Q8WZ75

Background:

Magic roundabout (ROBO4) is a protein belonging to the immunoglobulin superfamily. In the extracellular region, ROBO4 has only two of the five immunoglobulin and two of the three fibronectin domains present in other roundabout genes. ROBO4 is a receptor for Slit proteins, and seems to be involved in angiogenesis and vascular patterning. It may mediate the inhibition of primary endothelial cell migration by Slit proteins. ROBO4 is endothelial specific and expressed at sites of active angiogenesis in different tumor types.

Other Names:

Roundabout homolog 4, Magic roundabout

Source and Purity:

Rabbit polyclonal antibodies were produced by immunizing animals with a GST-fusion protein containing the middle region of human ROBO4. Antibodies were purified by affinity purification using immunogen.

Storage Buffer and Condition:

Supplied in 1 x PBS (pH 7.4), 100 ug/ml BSA, 40% Glycerol, 0.01% NaN₃. Store at -20 °C. Stable for 6 months from date of receipt.

Species Specificity:

Human

Tested Applications:

WB: 1:500-1:1,000 (detect endogenous protein*)

*: The apparent protein size on WB may be different from the calculated M.W. due to modifications.

Product Data:

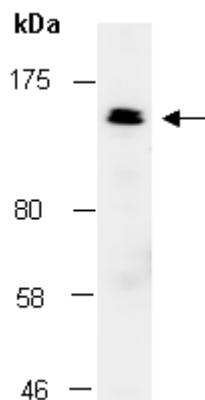


Fig 1. Western blot of total cell extracts from human HeLa, using Ab (R1056-2) at RT for 2 h.