



Order: (888)-282-5810 (Phone)
(818)-707-0392 (Fax)
order@abiocode.com
Web: www.Abiocode.com

RORA (M) Antibody, Rabbit Polyclonal

Cat#: R0227-2

Quantity: 100 ul

Predicted M.W.: 59 kDa (mouse) and 63 kDa (human)

Lot#: Refer to vial

Application: WB

Uniprot ID: P51448

Background:

Nuclear receptor ROR-alpha (RORA) is an orphan nuclear receptor that belongs to the nuclear hormone receptor family, NR1 subfamily. RORA binds DNA as a monomer to hormone response elements (HRE) containing a single core motif half-site preceded by a short A-T-rich sequence. RORA regulates a number of genes involved in lipid metabolism, such as apolipoproteins AI, APOA5, CIII, CYP71 and PPARgamma; in cerebellum and photoreceptor development including PCP2, OPN1SW, OPN1SM AND ARR3; in circadian rhythm with BMAL1, and skeletal muscle development with MYOD1. RORA is a possible receptor for cholesterol or one of its derivatives.

Other Names:

Nuclear receptor ROR-alpha, Nuclear receptor RZR-alpha, Nuclear receptor subfamily 1 group F member 1, Retinoid-related orphan receptor-alpha, Nr1f1, Rzra

Source and Purity:

Rabbit polyclonal antibodies were produced by immunizing animals with a GST-fusion protein containing the middle region of mouse RORA. Antibodies were purified by affinity purification using immunogen.

Storage Buffer and Condition:

Supplied in 1 x PBS (pH 7.4), 100 ug/ml BSA, 40% Glycerol, 0.01% NaN₃. Store at -20 °C. Stable for 6 months from date of receipt.

Species Specificity:

Human, Mouse

Tested Applications:

WB: 1:1,000-1:5,000 (detect endogenous protein*)

*: The apparent protein size on WB may be different from the calculated M.W. due to modifications.

Product Data:

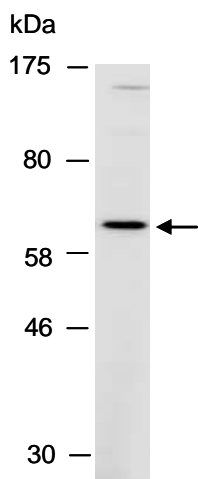


Fig 1. Western blot of total cell extracts from human MCF7, using Ab (R0227-2) at RT for 2 h.