



Order: (888)- 282-5810 (Phone)
(818)-707-0392 (Fax)
order@abiocode.com
Web: www.Abiocode.com

IL-22 (N) Antibody, Mouse Monoclonal

Cat#: M0004-1

Quantity: 100 ul

Predicted M.W.: 20 kDa

Isotype: mouse IgG1

Lot#: Refer to vial

Application: WB, ELISA

Uniprot ID: Q9GZX6

Clone: 5G8

Background:

IL-22 is a member of the IL-10 cytokine superfamily, which are potent mediators of cellular inflammatory responses. IL-22 is produced by activated DC and T cells and initiates innate immune responses against bacterial pathogens, especially in epithelial cells such as respiratory and gut epithelial cells. IL-22 along with IL-17 is rapidly produced by splenic LTI-like cells and can also be produced by Th17 cells. IL-22 plays a role in the coordinated response of both adaptive and innate immune systems. In some contexts, the pro-inflammatory versus tissue-protective functions of IL-22 are regulated by the co-expressed cytokine IL-17A.

Other Names:

IL-10-related T-cell-derived-inducible factor, IL-TIF, ZCYTO18, UNQ3099/PRO10096

Source and Purity:

Mouse monoclonal antibodies were produced by immunizing animals with a GST-fusion protein containing the N-terminal region of human IL-22. Antibodies were purified by Caprylic Acid-Ammonium Sulfate precipitation.

Storage Buffer and Condition:

Supplied in 1 x PBS (pH 7.4), 40% Glycerol, 0.02% Thimerosal. Store at -20 °C. Stable for at least 6 months from date of receipt.

Species Specificity:

Human

Tested Applications:

WB: 1:1,000-1:5,000 (detect recombinant protein)

ELISA: 1:1,000- 1:10,000 (detect native recombinant protein in a direct ELISA assay).
Suitable for using as ELISA capture or detection antibodies.

For research use only. Not for therapeutic or diagnostic purposes.
Abiocode, Inc., 29397 Agoura Rd., Ste 106, Agoura Hills, CA 91301

Product Data:

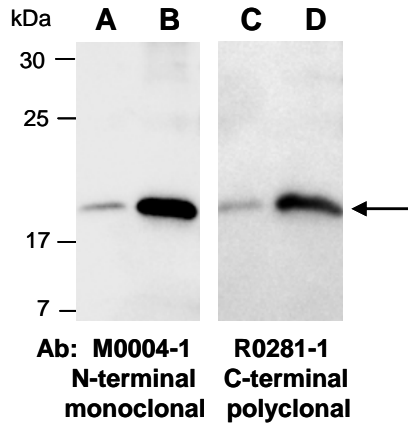


Fig 1. Western blot of recombinant human IL-22 protein (A, C: 10ng, B, D: 100 ng), using 2 independent Abs as indicated at RT for 2 h.