



Order: (888)- 282-5810 (Phone)  
(818)-707-0392 (Fax)  
[order@abiocode.com](mailto:order@abiocode.com)  
Web: [www.Abiocode.com](http://www.Abiocode.com)

---

## CD31 (C) Antibody, Mouse Monoclonal

**Cat#:** M0006-2

**Quantity:** 100 ul

**Predicted M.W.:** 83 kDa

**Isotype:** mouse IgG1

**Lot#:** Refer to vial

**Application:** WB

**Uniprot ID:** Q08481

**Clone:** 2D11

### Background:

CD31 is also known as Platelet/endothelial cell adhesion molecule (PECAM1), which is a cell adhesion molecule found on the surface of platelets, monocytes, neutrophils and certain T-cells. It is required for leukocyte transendothelial migration and is likely involved in angiogenesis and integrin activation. CD31 prevents phagocyte ingestion of viable cells by transmitting a 'detachment' signal. It also promotes attachment of dying cells to phagocytes. During apoptosis, the inside-out signaling of CD31 is disabled so that the apoptotic cells do not actively reject the phagocyte.

### Other Names:

RP23-247J12.1, C85791, MGC102160, PECAM-1, Pecam

### Source and Purity:

Mouse monoclonal antibodies were produced by immunizing animals with a GST-fusion protein containing the C-terminal region of mouse CD31. Antibodies were purified by Caprylic Acid-Ammonium Sulfate precipitation.

### Storage Buffer and Condition:

Supplied in 1 x PBS (pH 7.4), 40% Glycerol, 0.02% Thimerosal. Store at -20 °C. Stable for at least 6 months from date of receipt.

### Species Specificity:

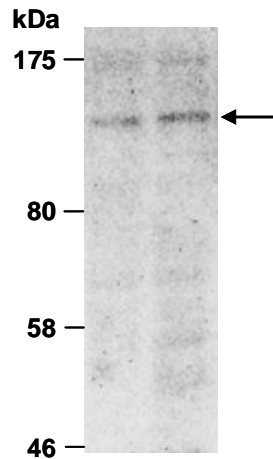
Human, mouse

### Tested Applications:

WB: 1:1,000-1:5,000 (detect endogenous protein\*)

\*: The apparent protein size on WB may be different from the calculated M.W. due to modifications.

**Product Data:**



**Fig 1.** Western blot of total cell extracts from (A) human A431, (B) human Jurkat, using Ab (M0006-2) at RT for 2 h.