



Order: (888)- 282-5810 (Phone)
(818)-707-0392 (Fax)
order@abiocode.com
Web: www.Abiocode.com

FGF23 (C) Antibody, Mouse Monoclonal

Cat#: M0010-1

Quantity: 100 ul

Predicted M.W.: 28 kDa

Isotype: mouse IgG1

Lot#: Refer to vial

Application: WB, ELISA

Uniprot ID: Q9GZV9

Clone: 10H8

Background:

Fibroblast growth factor 23 (FGF23) is a member of the FGF family. Members of this family are capable of broad mitogenic and cell survival activities and are involved in a multitude of biological processes including embryogenesis, cell growth, morphogenesis, tissue repair, tumor growth and invasion. FGF23 inhibits renal tubular phosphate transport by reducing SLC34A1 levels. This gene was identified by its mutations associated with autosomal dominant hypophosphatemic rickets (ADHR), an inherited phosphate wasting disorder.

Other Names:

UNQ3027/PRO9828, ADHR, HPDR2, HYPF, PHPTC

Source and Purity:

Mouse monoclonal antibodies were produced by immunizing animals with a GST-fusion protein containing the C-terminal region of human FGF23. Antibodies were purified by Caprylic Acid-Ammonium Sulfate precipitation.

Storage Buffer and Condition:

Supplied in 1 x PBS (pH 7.4), 40% Glycerol, 0.02% Thimerosal. Store at -20 °C. Stable for at least 6 months from date of receipt.

Species Specificity:

Human

Tested Applications:

WB: 1:1,000-1:5,000 (detect recombinant protein)

ELISA: 1:1,000- 1:10,000 (detect native recombinant protein in a direct ELISA assay)
Suitable for using as ELISA capture or detection antibodies.

Product Data:

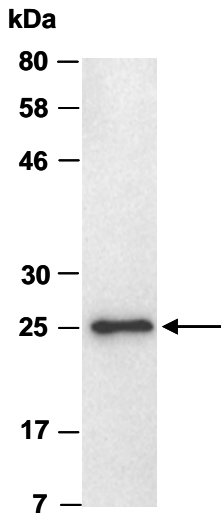


Fig 1. Western blot of recombinant human FGF23 protein (100 ng), using Ab (M0010-1) at RT for 2 h.