



Order: (888)-282-5810 (Phone)
(818)-707-0392 (Fax)
order@abiocode.com
Web: www.Abiocode.com

CUL4A (vPair™) Antibodies

Cat#: R0210-vp

Lot#: Refer to vial

Predicted M.W.: 88 kDa

Uniprot ID: Q13619

Application: WB

Quantity: 50 ul CUL4A (N2) (R0210-1) Rabbit Polyclonal Antibody &
50 ul CUL4A (N1) (R0210-2) Rabbit Polyclonal Antibody

Product Introduction:

vPair™ antibodies represent a pair of fully characterized antibodies that recognize two different regions of a target protein. The product is developed by Abiocode to address whether the signal observed truly represents the protein of interest, an often encountered issue in antibody-based assays. The use of a pair of fully characterized vPair™ antibodies in the same assay can validate signal specificity since vPair™ antibodies recognize two independent epitopes of the same protein. Different sets of vPair™ antibodies are developed at Abiocode to work with specific applications, including antibody arrays, Western blot, IP-Western, ChIP, IHC, and FACS.

Background:

CUL4A is the ubiquitin ligase component of a multimeric complex involved in the degradation of DNA damage-response proteins. CUL4A is a core component of multiple cullin-RING-based E3 ubiquitin-protein ligase complexes which mediate the ubiquitination and subsequent proteasomal degradation of target proteins. As a scaffold protein, CUL4A may contribute to catalysis through positioning of the substrate and the ubiquitin-conjugating enzyme. The E3 ubiquitin-protein ligase activity of the complex is dependent on the neddylation of the cullin subunit. CUL4A may be involved in ubiquitination of JUN, P53, CDKN1B and HOXA9.

Other Names:

Cullin-4A

Source and Purity:

Rabbit polyclonal antibodies were produced by immunizing animals with GST-fusion proteins containing two distinct N-terminal regions [CUL4A (N2) (R0210-1); CUL4A (N1) (R0210-2)] of human CUL4A. Antibodies were purified by affinity purification using immunogen.

Storage Buffer and Condition:

Supplied in 1 x PBS (pH 7.4), 100 ug/ml BSA, 40% Glycerol, 0.01% NaN₃. Store at -20 °C. Stable for 6 months from date of receipt.

Species Specificity:

Human

Tested Applications:

WB: 1:500-1:1,000 (detect endogenous protein*)

*: The apparent protein size on WB may be different from the calculated M.W. due to modifications.

Product Data:

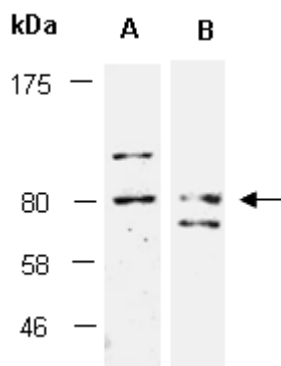


Fig 1. Western blot of total cell extracts from human HeLa, using (A) Ab (R0210-1), (B) Ab (R0210-2) at RT for 2 h.