



Order: (888)-282-5810 (Phone)
(818)-707-0392 (Fax)
order@abiocode.com
Web: www.Abiocode.com

NOTCH2 (vPair™) Antibodies

Cat#: R0746-vp

Lot#: Refer to vial

Predicted M.W.: 265 kDa

Uniprot ID: Q04721

Application: WB

Quantity: 50 ul NOTCH2 (C2) (R0746-2) Rabbit Polyclonal Antibody &
50 ul NOTCH2 (C1) (R0746-3) Rabbit Polyclonal Antibody

Product Introduction:

vPair™ antibodies represent a pair of fully characterized antibodies that recognize two different regions of a target protein. The product is developed by Abiocode to address whether the signal observed truly represents the protein of interest, an often encountered issue in antibody-based assays. The use of a pair of fully characterized vPair™ antibodies in the same assay can validate signal specificity since vPair™ antibodies recognize two independent epitopes of the same protein. Different sets of vPair™ antibodies are developed at Abiocode to work with specific applications, including antibody arrays, Western blot, IP-Western, CHIP, IHC, and FACS.

Background:

Neurogenic locus notch homolog protein 2 (NOTCH2) is a single-pass type I membrane protein that belongs to the NOTCH family. NOTCH2 functions as a receptor for membrane-bound ligands Jagged1, Jagged2 and Delta1 to regulate cell-fate determination. It is involved in bone remodeling and homeostasis. In collaboration with RELA/p65, NOTCH2 enhances NFATc1 promoter activity and positively regulates RANKL-induced osteoclast differentiation. Defects in NOTCH2 cause Alagille syndrome type 2 (ALGS2) and Hajdu-Cheney syndrome (HJCYS).

Other Names:

Neurogenic locus notch homolog protein 2, hN2, Notch 2

Source and Purity:

Rabbit polyclonal antibodies were produced by immunizing animals with a GST-fusion protein containing two distinct C-terminal regions [NOTCH2 (C2) (R0746-2); NOTCH2 (C1) (R0746-3)] of human NOTCH2. Antibodies were purified by affinity purification using immunogen.

Storage Buffer and Condition:

Supplied in 1 x PBS (pH 7.4), 100 ug/ml BSA, 40% Glycerol, 0.01% NaN₃. Store at -20 °C. Stable for 6 months from date of receipt.

Species Specificity:

Human

Tested Applications:

WB: 1:500-1:1,000 (detect endogenous protein*)

*: The apparent protein size on WB may be different from the calculated M.W. due to modifications.

Product Data:

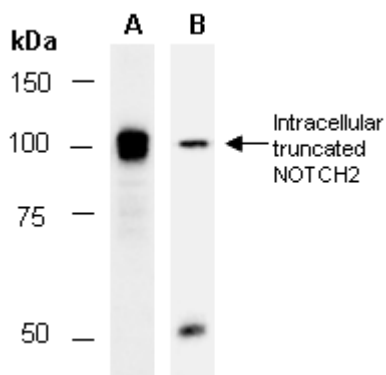


Fig 1. Western blot of total cell extracts from human 293T, using (A) Ab (R0746-2), (B) Ab (R0746-3) at RT for 2 h.