



Order: (888)-282-5810 (Phone)  
(818)-707-0392 (Fax)  
[order@abiocode.com](mailto:order@abiocode.com)  
Web: [www.Abiocode.com](http://www.Abiocode.com)

---

## **PU.1 (N) Antibody, Rabbit Polyclonal**

**Cat#: R0787-1**

**Quantity: 100 ul**

**Predicted M.W.: 38 kDa**

**Lot#: Refer to vial**

**Application: WB**

**Uniprot ID: P17947**

### **Background:**

Transcription factor PU.1, also known as SPI1, belongs to the ETS family. It binds to the PU-box, a purine-rich DNA sequence (5'-GAGGAA-3') and acts as a lymphoid-specific enhancer. PU.1 is a transcriptional activator involved in the differentiation or activation of macrophages and B lymphocytes. PU.1 also binds to RNA and may modulate pre-mRNA splicing. PU.1 is highly expressed in both FV-P and FV-A-induced erythro-leukemia cell lines that have undergone rearrangements of the Spi-1 gene due to the insertion of spleen focus-forming virus (SFFV).

### **Other Names:**

SPI1, Transcription factor PU.1, 31 kDa-transforming protein

### **Source and Purity:**

Rabbit polyclonal antibodies were produced by immunizing animals with a GST-fusion protein containing the N-terminal region of human PU.1. Antibodies were purified by affinity purification using immunogen.

### **Storage Buffer and Condition:**

Supplied in 1 x PBS (pH 7.4), 100 ug/ml BSA, 40% Glycerol, 0.01% NaN<sub>3</sub>. Store at -20 °C. Stable for 6 months from date of receipt.

### **Species Specificity:**

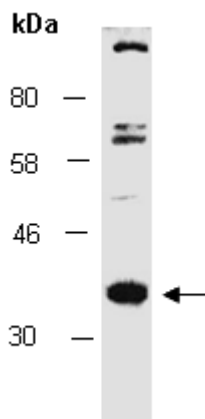
Human

### **Tested Applications:**

WB: 1:500-1:1,000 (detect endogenous protein\*)

\*: The apparent protein size on WB may be different from the calculated M.W. due to modifications.

**Product Data:**



**Fig 1.** Western blot of total cell extracts from human THP1, using Ab (R0787-1) at RT for 2 h.