



Order: (888)-282-5810 (Phone)
(818)-707-0392 (Fax)
order@abiocode.com
Web: www.Abiocode.com

KRT2 (N) Antibody, Rabbit Polyclonal

Cat#: R0862-1

Quantity: 100 ul

Predicted M.W.: 65 kDa

Lot#: Refer to vial

Application: WB

Uniprot ID: P35908

Background:

Keratin, type II cytoskeletal 2 epidermal (KRT2) belongs to the intermediate filament family. It is a heterotetramer of two type I and two type II keratins. KRT2 probably contributes to terminal cornification. It is associated with keratinocyte activation, proliferation and keratinization. KRT2 is expressed in the upper spinous and granular suprabasal layers of normal adult epidermal tissues. Defects in KRT2 are a cause of ichthyosis bullosa of Siemens (IBS).

Other Names:

Keratin, type II cytoskeletal 2 epidermal, KRT2A, KRT2E, Cytokeratin-2e, CK-2e, Epithelial keratin-2e, Keratin-2 epidermis, Keratin-2e, K2e, Type-II keratin Kb2

Source and Purity:

Rabbit polyclonal antibodies were produced by immunizing animals with a GST-fusion protein containing the N-terminal region of human KRT2. Antibodies were purified by affinity purification using immunogen.

Storage Buffer and Condition:

Supplied in 1 x PBS (pH 7.4), 100 ug/ml BSA, 40% Glycerol, 0.01% NaN₃. Store at -20 °C. Stable for 6 months from date of receipt.

Species Specificity:

Human

Tested Applications:

WB: 1:500-1:1,000 (detect endogenous protein*)

*: The apparent protein size on WB may be different from the calculated M.W. due to modifications.

Product Data:

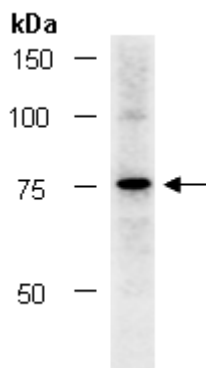


Fig 1. Western blot of total cell extracts from human A431, using Ab (R0862-1) at RT for 2 h.