



Order: (888)-282-5810 (Phone)
(818)-707-0392 (Fax)
order@abiocode.com
Web: www.Abiocode.com

MMP25 (C) Antibody, Rabbit Polyclonal

Cat#: R1037-2

Quantity: 100 ul

Predicted M.W.: 63 kDa

Lot#: Refer to vial

Application: WB

Uniprot ID: Q9NPA2

Background:

Matrix metalloproteinase-25 belongs to the peptidase M10A family. It is a member of the membrane-type MMP (MT-MMP) subfamily, attached to the plasma membrane via a glycosylphosphatidyl inositol anchor. In response to bacterial infection or inflammation, MMP25 is thought to inactivate alpha-1 proteinase inhibitor, a major tissue protectant against proteolytic enzymes released by activated neutrophils, facilitating the transendothelial migration of neutrophils to inflammatory sites. It may also play a role in tumor invasion and metastasis through activation of MMP2. The gene has previously been referred to as MMP20 but has been renamed MMP25. MMP25 is expressed in colon carcinoma, astrocytoma and glioblastomas.

Other Names:

Matrix metalloproteinase-25, MMP-25, Leukolysin, Membrane-type matrix metalloproteinase 6, MT-MMP 6, MTMMP6, Membrane-type-6 matrix metalloproteinase, MT6-MMP, MT6MMP, MMP20, MMPL1, MT6MMP

Source and Purity:

Rabbit polyclonal antibodies were produced by immunizing animals with a GST-fusion protein containing the C-terminal region of human MMP25. Antibodies were purified by affinity purification using immunogen.

Storage Buffer and Condition:

Supplied in 1 x PBS (pH 7.4), 100 ug/ml BSA, 40% Glycerol, 0.01% NaN₃. Store at -20 °C. Stable for 6 months from date of receipt.

Species Specificity:

Human, Mouse

Tested Applications:

WB: 1:500-1:1,000 (detect endogenous protein*)

*: The apparent protein size on WB may be different from the calculated M.W. due to modifications.

Product Data:

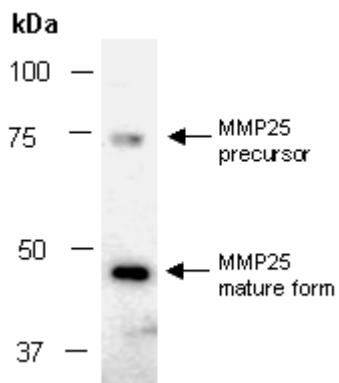


Fig 1. Western blot of total cell extracts from mouse liver, using Ab (R1037-2) at RT for 2 h.