



Order: (888)-282-5810 (Phone)
(818)-707-0392 (Fax)
order@abiocode.com
Web: www.Abiocode.com

FLT3L (vPair™) Antibodies

Cat#: R0095-vp

Lot#: Refer to vial

Predicted M.W.: 26 kDa

Uniprot ID: P49772

Application: WB, ELISA

Quantity: 50 ug FLT3L (C) (R0095-1) Rabbit Polyclonal Antibody &
50 ug FLT3L (N) (R0095-2) Rabbit Polyclonal Antibody

Product Introduction:

vPair™ antibodies represent a pair of fully characterized antibodies that recognize two different regions of a target protein. The product is developed by Abiocode to address whether the signal observed truly represents the protein of interest, an often encountered issue in antibody-based assays. The use of a pair of fully characterized vPair™ antibodies in the same assay can validate signal specificity since vPair™ antibodies recognize two independent epitopes of the same protein. Different sets of vPair™ antibodies are developed at Abiocode to work with specific applications, including antibody arrays, Western blot, IP-Western, CHIP, IHC, and FACS.

Background:

Fms-related tyrosine kinase 3 ligand (FLT3L) is a cytokine that stimulates the proliferation of early hematopoietic cells. It synergizes with a number of other colony stimulating factors and interleukins. Structurally it is similar to stem cell factor and colony stimulating factor 1.

Other Names:

Flt3lg, Ly72L

Source and Purity:

Rabbit polyclonal antibodies were produced by immunizing animals with a GST-fusion protein containing either the C-terminal region [FLT3L(C), R0095-1], or the N-terminal region [FLT3L(N), R0095-2] of mouse FLT3L. Antibodies were purified by affinity purification using immunogen.

Storage Buffer and Condition:

Supplied in 1 x PBS (pH 7.4), 40% Glycerol, 0.01% NaN₃. Store at -20 °C. Stable for 6 months from date of receipt.

Species Specificity:

Mouse

**For research use only. Not for therapeutic or diagnostic purposes.
Abiocode, Inc., 29397 Agoura Rd., Ste 106, Agoura Hills, CA 91301**

Tested Applications:

WB: 1:1,000-1:5,000 (detect recombinant protein)

ELISA: 1:1,000- 1:10,000 (both antibodies detect native recombinant protein in a direct ELISA assay).
Suitable for using as ELISA capture or detection antibody.

Product Data:

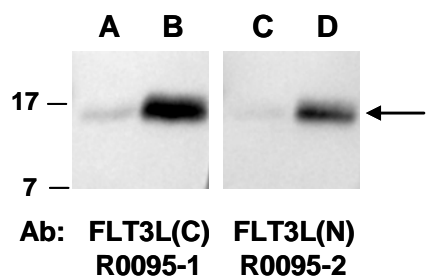


Fig 1. Western blot of recombinant mouse FLT3L protein (A&C: 10 ng; B&D: 100 ng), using indicated Abs at RT for 2 h.