



Order: (888)-282-5810 (Phone)
(818)-707-0392 (Fax)
order@abiocode.com
Web: www.Abiocode.com

OLFML2A (N) Antibody, Rabbit Polyclonal

Cat#: R1011-1

Quantity: 100 ul

Predicted M.W.: 73 kDa

Lot#: Refer to vial

Application: WB

Uniprot ID: Q68BL7

Background:

Olfactomedin-like protein 2A (OLFML2A) is a homodimer belonging to the OLF (olfactomedin) family. OLF family proteins are extracellular glycoproteins that contain an OLF domain at the C terminal. OLFML2A binds to heparin and chondroitin sulfate E preferentially and contains 1 olfactomedin-like domain. OLFML2A is secreted as disulfide-bonded dimers with O-linked carbohydrate chains and is further cleaved/processed after secretion. In the retina, OLFML2A is selectively expressed in the outer segment of photoreceptor cells.

Other Names:

Olfactomedin-like protein 2A, Photomedin-1

Source and Purity:

Rabbit polyclonal antibodies were produced by immunizing animals with a GST-fusion protein containing the N-terminal region of human OLFML2A. Antibodies were purified by affinity purification using immunogen.

Storage Buffer and Condition:

Supplied in 1 x PBS (pH 7.4), 100 ug/ml BSA, 40% Glycerol, 0.01% NaN₃. Store at -20 °C. Stable for 6 months from date of receipt.

Species Specificity:

Human

Tested Applications:

WB: 1:500-1:1,000 (detect endogenous protein*)

*: The apparent protein size on WB may be different from the calculated M.W. due to modifications.

Product Data:

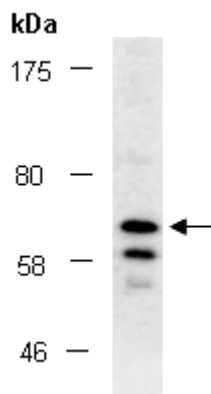


Fig 1. Western blot of total cell extracts from human HepG2, using Ab (R1011-1) at RT for 2 h.