



Order: (888)-282-5810 (Phone)
(818)-707-0392 (Fax)
order@abiocode.com
Web: www.Abiocode.com

BMI1 (C) Antibody, Rabbit Polyclonal

Cat#: R0116-1b

Quantity: 100 ul

Predicted | Observed MW: 37 | 43 kDa

Lot#: Refer to vial

Application: WB

Uniprot ID: P35226

Background:

Polycomb complex protein BMI-1 (Bmi1) is a component of a Polycomb group (PcG) multiprotein PRC1-like complex, a complex class required to maintain the transcriptionally repressive state of many genes, including Hox genes, throughout development. The PcG PRC1 complex acts via chromatin remodeling and modification of histones; it mediates monoubiquitination of histone H2A 'Lys-119', rendering chromatin heritably changed in its expressibility. In the PRC1 complex, it is required to stimulate the E3 ubiquitin-protein ligase activity of RNF2/RING2.

Other Names:

Polycomb complex protein BMI-1, Polycomb group RING finger protein 4, Bmi-1, Pcgf4

Source and Purity:

Rabbit polyclonal antibodies were produced by immunizing animals with GST-fusion proteins containing the C-terminal region of mouse BMI1, and provided as whole antiserum.

Storage Buffer and Condition:

Supplied as whole rabbit serum containing 30% Glycerol and 0.01% NaN₃. Store at -20°C. Stable for 6 months from date of receipt.

Species Specificity:

Mouse

Tested Applications:

WB: 1:1,000-1:5,000 (detect endogenous protein*)

*: The apparent protein size on WB may be different from the calculated M.W. due to modifications.

Product Data:

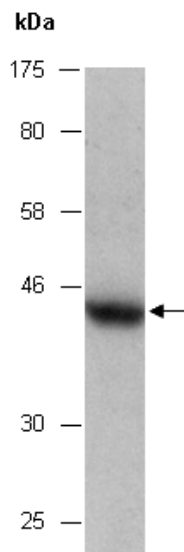


Fig 1. Western blot of total cell extracts from mouse brain, using Ab (R0116-1b) at RT for 2 h. The observed M.W. of BMI1 is approximately 43 kD.