



Order: (888)-282-5810 (Phone)
(818)-707-0392 (Fax)
order@abiocode.com
Web: www.Abiocode.com

PAX2 (C) Antibody, Rabbit Polyclonal

Cat#: R0770-3

Quantity: 100 ul

Predicted | Observed MW: 45 | 50 kDa

Lot#: Refer to vial

Application: WB

Uniprot ID: Q02962

Background:

Paired box protein Pax-2 is a probable transcription factor that may have a role in kidney cell differentiation. Has a critical role in the development of the urogenital tract, the eyes, and the CNS. PAX2 is believed to be a target of transcriptional suppression by the tumor suppressor gene WT1. It interacts with ELGN3; the interaction targets PAX2 for destruction. Defects in PAX2 are the cause of renal-coloboma syndrome (RCS) and may be responsible for isolated renal hypoplasia.

Other Names:

Paired box protein Pax-2

Source and Purity:

Rabbit polyclonal antibodies were produced by immunizing animals with a GST-fusion protein containing the C-terminal region of human PAX2. Antibodies were purified by affinity purification using immunogen.

Storage Buffer and Condition:

Supplied in 1 x PBS (pH 7.4), 100 ug/ml BSA, 40% Glycerol, 0.01% NaN₃. Store at -20 °C. Stable for 6 months from date of receipt.

Species Specificity:

Human, Mouse

Tested Applications:

WB: 1:500-1:2,000 (detect endogenous protein*)

*: The apparent protein size on WB may be different from the calculated M.W. due to modifications.

Product Data:

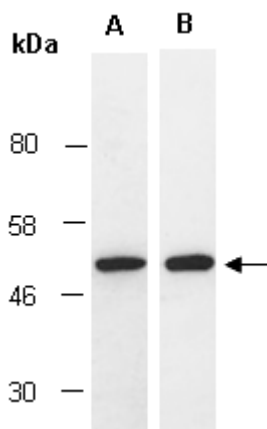


Fig 1. Western blot of total cell extracts from mouse brain, using (A) Ab (R0770-2), (B) Ab (R0770-3) at RT for 2 h.