



Order: (888)-282-5810 (Phone)
(818)-707-0392 (Fax)
order@abiocode.com
Web: www.Abiocode.com

PAX2 (vPair™) Antibodies

Cat#: R0770-vp

Lot#: Refer to vial

Predicted | Observed MW: 45 | 50 kDa

Uniprot ID: Q02962

Application: WB

Quantity: 50 ul PAX2 (M) (R0770-2) Rabbit Polyclonal Antibody &
50 ul PAX2 (C) (R0770-3) Rabbit Polyclonal Antibody

Product Introduction:

vPair™ antibodies represent a pair of fully characterized antibodies that recognize two different regions of a target protein. The product is developed by Abiocode to address whether the signal observed truly represents the protein of interest, an often encountered issue in antibody-based assays. The use of a pair of fully characterized vPair™ antibodies in the same assay can validate signal specificity since vPair™ antibodies recognize two independent epitopes of the same protein. Different sets of vPair™ antibodies are developed at Abiocode to work with specific applications, including antibody arrays, Western blot, IP-Western, CHIP, IHC, and FACS.

Background:

Paired box protein Pax-2 is a probable transcription factor that may have a role in kidney cell differentiation. Has a critical role in the development of the urogenital tract, the eyes, and the CNS. PAX2 is believed to be a target of transcriptional suppression by the tumor suppressor gene WT1. It interacts with ELGN3; the interaction targets PAX2 for destruction. Defects in PAX2 are the cause of renal-coloboma syndrome (RCS) and may be responsible for isolated renal hypoplasia.

Other Names:

Paired box protein Pax-2

Source and Purity:

Rabbit polyclonal antibodies were produced by immunizing animals with a GST-fusion protein containing either the middle [PAX2 (M) (R0770-2)] or the C-terminal [PAX2 (C) (R0770-3)] region of human PAX2. Antibodies were purified by affinity purification using immunogen.

Storage Buffer and Condition:

Supplied in 1 x PBS (pH 7.4), 100 ug/ml BSA, 40% Glycerol, 0.01% NaN₃. Store at -20 °C. Stable for 6 months from date of receipt.

For research use only. Not for therapeutic or diagnostic purposes.
Abiocode, Inc., 29397 Agoura Rd., Ste 106, Agoura Hills, CA 91301

Species Specificity:

Human, Mouse

Tested Applications:

WB: 1:500-1:2,000 (detect endogenous protein*)

*: The apparent protein size on WB may be different from the calculated M.W. due to modifications.

Product Data:

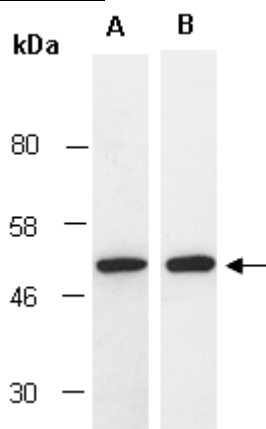


Fig 1. Western blot of total cell extracts from mouse brain, using (A) Ab (R0770-2), (B) Ab (R0770-3) at RT for 2 h.