



Order: (888)-282-5810 (Phone)
(818)-707-0392 (Fax)
order@abiocode.com
Web: www.Abiocode.com

PAX6 (N) Antibody, Rabbit Polyclonal

Cat#: R0778-1

Quantity: 100 ul

Predicted | Observed MW: 47 kDa

Lot#: Refer to vial

Application: WB

Uniprot ID: P26367

Background:

Paired box protein Pax-6 (PAX6) is a transcription factor that belongs to the paired homeobox family. PAX6 has important functions in the development of the eye, nose, central nervous system and pancreas. It is required for the differentiation of pancreatic islet alpha cells. Defects in PAX6 are the cause of aniridia (AN), Peters anomaly (PAN), keratitis hereditary (KERH), coloboma of iris choroid and retina (COI), coloboma of optic nerve (COLON), bilateral optic nerve hypoplasia (BONH), and nirdia cerebellar ataxia and mental deficiency (ACAMD).

Other Names:

Paired box protein Pax-6, Aniridia type II protein, Oculorhombin, AN2

Source and Purity:

Rabbit polyclonal antibodies were produced by immunizing animals with a GST-fusion protein containing the N-terminal region of human PAX6. Antibodies were purified by affinity purification using immunogen.

Storage Buffer and Condition:

Supplied in 1 x PBS (pH 7.4), 100 ug/ml BSA, 40% Glycerol, 0.01% NaN₃. Store at -20 °C. Stable for 6 months from date of receipt.

Species Specificity:

Human, Mouse

Tested Applications:

WB: 1:500-1:2,000 (detect endogenous protein*)

*: The apparent protein size on WB may be different from the calculated M.W. due to modifications.

Product Data:

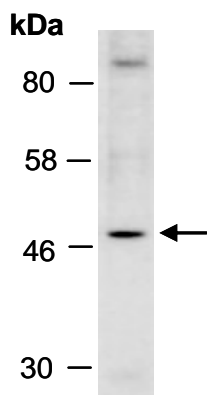


Fig 1. Western blot of total cell extracts from mouse brain, using Ab (R0778-1) at RT for 2 h.