



Order: (888)-282-5810 (Phone)
(818)-707-0392 (Fax)
order@abiocode.com
Web: www.Abiocode.com

TSC1 (N) Antibody, Rabbit Polyclonal

Cat#: R0854-1

Quantity: 100 ul

Predicted | Observed MW: 130 kDa

Lot#: Refer to vial

Application: WB

Uniprot ID: Q92574

Background:

Tuberous sclerosis 1 protein (TSC1) is a peripheral membrane protein. In complex with TSC2, TSC1 inhibits the nutrient-mediated or growth factor-stimulated phosphorylation of S6K1 and EIF4EBP1 by negatively regulating mTORC1 signaling. It seems not to be required for TSC2 GAP activity towards RHEB. It is implicated as a tumor suppressor. TSC1 is involved in microtubule-mediated protein transport, but this seems to be due to unregulated mTOR signaling. Defects in TSC1 are the cause of tuberous sclerosis type 1 (TSC1) and may be the cause of focal cortical dysplasia of Taylor balloon cell type (FCDBC).

Other Names:

Hamartin, Tuberous sclerosis 1 protein, KIAA0243, TSC

Source and Purity:

Rabbit polyclonal antibodies were produced by immunizing animals with a GST-fusion protein containing the N-terminal region of human TSC1. Antibodies were purified by affinity purification using immunogen.

Storage Buffer and Condition:

Supplied in 1 x PBS (pH 7.4), 100 ug/ml BSA, 40% Glycerol, 0.01% NaN₃. Store at -20 °C. Stable for 6 months from date of receipt.

Species Specificity:

Human

Tested Applications:

WB: 1:500-1:2,000 (detect endogenous protein*)

*: The apparent protein size on WB may be different from the calculated M.W. due to modifications.

Product Data:

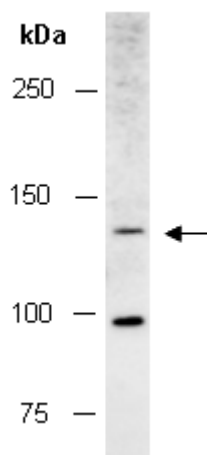


Fig 1. Western blot of total cell extracts from human HeLa, using Ab (R0854-1) at RT for 2 h.