



Order: (888)-282-5810 (Phone)
(818)-707-0392 (Fax)
order@abiocode.com
Web: www.Abiocode.com

KDM5B (N) Antibody, Rabbit Polyclonal

Cat#: R0158-1

Quantity: 100 ul

Predicted M.W.: 176 kDa

Lot#: Refer to vial

Application: WB

Uniprot ID: Q9UGL1

Background:

Lysine (K)-specific demethylase 5B (KDM5B) is a ubiquitously expressed nuclear protein. It is a histone demethylase that specifically demethylates 'Lys-4' of histone H3. It can demethylate trimethylated, dimethylated, and monomethylated 'Lys-4'. It acts as a transcriptional corepressor for FOXG1B and PAX9. It favors the proliferation of breast cancer cells by repressing tumor suppressor genes such as BRAC1 and HOXA5. In contrast, KDM5B may act as a tumor suppressor for melanoma.

Other Names:

CT31, FLJ10538, FLJ12491, FLJ16281, FLJ23670, JARID1B, PLU1, PLU-1, PUT1, RBBP2H1, Cancer/testis antigen 31, Histone demethylase JARID1B, Jumonji/ARID domain-containing protein 1B, Retinoblastoma-binding protein 2 homolog 1

Source and Purity:

Rabbit polyclonal antibodies were produced by immunizing animals with a GST-fusion protein containing the N-terminal region of human KDM5B. Antibodies were purified by affinity purification using immunogen.

Storage Buffer and Condition:

Supplied in 1 x PBS (pH 7.4), 100 ug/ml BSA, 40% Glycerol, 0.01% NaN₃. Store at -20 °C. Stable for 6 months from date of receipt.

Species Specificity:

Human, Mouse

Tested Applications:

WB: 1:1,000-1:5,000 (detect endogenous protein*)

*: The apparent protein size on WB may be different from the calculated M.W. due to modifications.

Product Data:

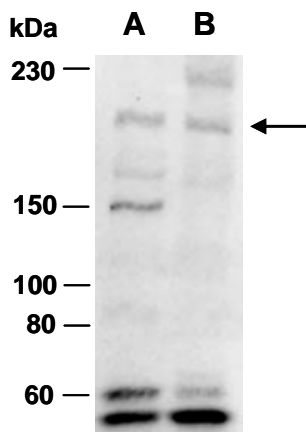


Fig 1. Western blot of total cell extracts from (A) human HeLa (B) mouse MEF, using Ab (R0158-1) at 4°C overnight.