



Order: (888)-282-5810 (Phone)
(818)-707-0392 (Fax)
order@abiocode.com
Web: www.Abiocode.com

CDH1 (C2) Antibody, Rabbit Polyclonal

Cat#: R0060-2

Quantity: 100 ul

Predicted | Observed MW: 97 | 135 kDa

Lot#: Refer to vial

Application: WB

Uniprot ID: P12830

Background:

Cadherin-1 (CDH1) is a single-pass membrane protein. Cadherins are calcium-dependent cell adhesion proteins. They preferentially interact with themselves in a homophilic manner in connecting cells; cadherins may thus contribute to the sorting of heterogeneous cell types. CDH1 is involved in mechanisms regulating cell-cell adhesions, mobility and proliferation of epithelial cells. It has a potent invasive suppressor role. It is a ligand for integrin alpha-E/beta-7. Defects in CDH1 are the cause of hereditary diffuse gastric cancer (HDGC) and are a cause of susceptibility to endometrial cancer (ENDMC) and ovarian cancer (OC).

Other Names:

Cadherin-1, CAM 120/80, Epithelial cadherin, E-cadherin, Uvomorulin, CD324, CDHE, UVO

Source and Purity:

Rabbit polyclonal antibodies were produced by immunizing animals with a GST-fusion protein containing the C-terminal region of human CDH1. Antibodies were purified by affinity purification using immunogen.

Storage Buffer and Condition:

Supplied in 1 x PBS (pH 7.4), 100 ug/ml BSA, 40% Glycerol, 0.01% NaN₃. Store at -20 °C. Stable for 6 months from date of receipt.

Species Specificity:

Human

Tested Applications:

WB: 1:500-1:1,000 (detect endogenous protein*)

*: The apparent protein size on WB may be different from the calculated M.W. due to modifications.

Product Data:

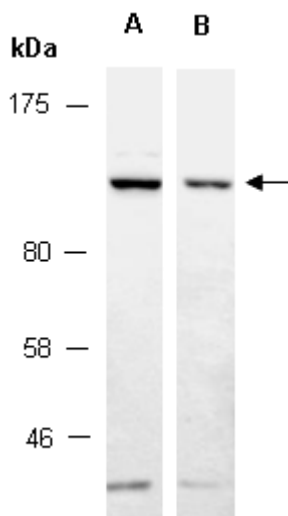


Fig 1. Western blot of total cell extracts from (A) human MCF7 and (B) human HeLa using Ab (R0060-2) at RT for 2 h.