



Order: (888)-282-5810 (Phone)
(818)-707-0392 (Fax)
order@abiocode.com
Web: www.Abiocode.com

MMP17 (M) Antibody, Rabbit Polyclonal

Cat#: R1038-2

Quantity: 100 ul

Predicted | Observed MW: 67 | 64, 67 kDa

Lot#: Refer to vial

Application: WB

Uniprot ID: Q9ULZ9

Background:

Matrix metalloproteinase-17 (MMP17) belongs to the peptidase M10A family. It is an endopeptidase that degrades various components of the extracellular matrix, such as fibrin. It may be involved in the activation of membrane-bound precursors of growth factors or inflammatory mediators, such as tumor necrosis factor-alpha. MMP17 may also be involved in tumoral process. It is not obvious if MMP17 is able to proteolytically activate progelatinase A. It does not hydrolyze collagen types I, II, III, IV and V, gelatin, fibronectin, laminin, decorin nor alpha1-antitrypsin.

Other Names:

Matrix metalloproteinase-17, MMP-17, Membrane-type matrix metalloproteinase 4, MT-MMP 4, MTMMP4, Membrane-type-4 matrix metalloproteinase, MT4-MMP, MT4MMP

Source and Purity:

Rabbit polyclonal antibodies were produced by immunizing animals with a GST-fusion protein containing the middle region of human MMP17. Antibodies were purified by affinity purification using immunogen.

Storage Buffer and Condition:

Supplied in 1 x PBS (pH 7.4), 100 ug/ml BSA, 40% Glycerol, 0.01% NaN₃. Store at -20 °C. Stable for 6 months from date of receipt.

Species Specificity:

Human

Tested Applications:

WB: 1:500-1:2,000 (detect endogenous protein*)

*: The apparent protein size on WB may be different from the calculated M.W. due to modifications.

Product Data:

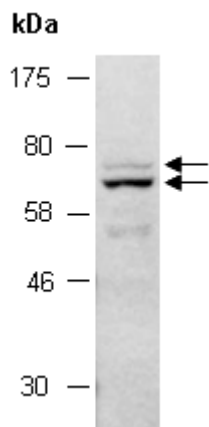


Fig 1. Western blot of total cell extracts from human MCF7, using Ab (R1038-2) at RT for 2 h.