



Order: (888)-282-5810 (Phone)
(818)-707-0392 (Fax)
order@abiocode.com
Web: www.Abiocode.com

Ki67 (C1) Antibody, Rabbit Polyclonal

Cat#: R0505-3

Quantity: 100 ul

Predicted | Observed MW: 360 kDa

Lot#: Refer to vial

Application: WB

Uniprot ID: P46013

Background:

Antigen KI-67 is a nuclear protein that is predominantly localized in the G1 phase in the perinucleolar region, in the later phases it is also detected throughout the nuclear interior, being predominantly localized in the nuclear matrix. In mitosis, it is present on all chromosomes. It is thought to be required for maintaining cell proliferation. Antigen KI-67 interacts with KIF15 and binds through the FHA domain to MKI67IP.

Other Names:

Antigen KI-67, MKI67

Source and Purity:

Rabbit polyclonal antibodies were produced by immunizing animals with a GST-fusion protein containing the C-terminal region of human Ki67. Antibodies were purified by affinity purification using immunogen.

Storage Buffer and Condition:

Supplied in 1 x PBS (pH 7.4), 100 ug/ml BSA, 40% Glycerol, 0.01% NaN₃. Store at -20 °C. Stable for 6 months from date of receipt.

Species Specificity:

Human

Tested Applications:

WB: 1:500-1:1,000 (detect endogenous protein*)

*: The apparent protein size on WB may be different from the calculated M.W. due to modifications.

Product Data:

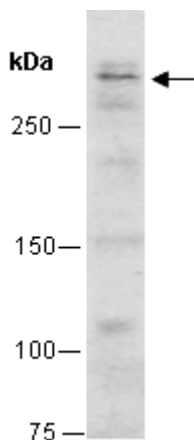


Fig 1. Western blot of total cell extracts from human HeLa, using Ab (R0505-3) at RT for 2 h.