



Order: (888)-282-5810 (Phone)  
(818)-707-0392 (Fax)  
[order@abiocode.com](mailto:order@abiocode.com)  
Web: [www.Abiocode.com](http://www.Abiocode.com)

---

## **TSC2 (C2) Antibody, Rabbit Polyclonal**

**Cat#: R0853-3**

**Quantity: 100 ul**

**Predicted | Observed MW: 201 | 230 kDa**

**Lot#: Refer to vial**

**Application: WB**

**Uniprot ID: P49815**

### **Background:**

Tuberin (TSC2) forms a complex with TSC1 and inhibits the nutrient-mediated or growth factor-stimulated phosphorylation of S6K1 and EIF4EBP1 by negatively regulating mTORC1 signaling. TSC2 acts as a GTPase-activating protein (GAP) for the small GTPase RHEB, a direct activator of the protein kinase activity of mTORC1. It is implicated as a tumor suppressor. TSC2 is involved in microtubule-mediated protein transport, but this seems to be due to unregulated mTOR signaling. Mutations in TSC2 lead to constitutive activation of RAP1A in tumors. Defects in TSC2 cause tuberous sclerosis type 2 (TSC2) and lymphangioleiomyomatosis (LAM).

### **Other Names:**

Tuberin, Tuberous sclerosis 2 protein, TSC4

### **Source and Purity:**

Rabbit polyclonal antibodies were produced by immunizing animals with a GST-fusion protein containing the C-terminal region of human TSC2. Antibodies were purified by affinity purification using immunogen.

### **Storage Buffer and Condition:**

Supplied in 1 x PBS (pH 7.4), 100 ug/ml BSA, 40% Glycerol, 0.01% NaN<sub>3</sub>. Store at -20 °C. Stable for 6 months from date of receipt.

### **Species Specificity:**

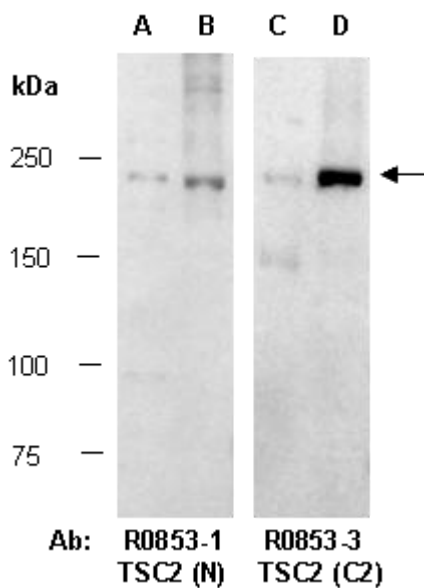
Human, Mouse

### **Tested Applications:**

WB: 1:500-1:1,000 (detect endogenous protein\*)

\*: The apparent protein size on WB may be different from the calculated M.W. due to modifications.

**Product Data:**



**Fig 1.** Western blot of total cell extracts from (A, C) human HeLa and (B, D) mouse MEF, using 2 independent Abs against 2 distinct regions of human TSC2 as indicated at RT for 2 h.