



Order: (888)-282-5810 (Phone)
(818)-707-0392 (Fax)
order@abiocode.com
Web: www.Abiocode.com

ITCH (N1) Antibody, Rabbit Polyclonal

Cat#: R0951-1

Quantity: 100 ul

Predicted | Observed MW: 103 kDa

Lot#: Refer to vial

Application: WB

Uniprot ID: Q96J02

Background:

E3 ubiquitin-protein ligase Itchy homolog (ITCH) acts as an E3 ubiquitin-protein ligase. ITCH ubiquitinates CXCR4 and HGS/HRS and regulates sorting of CXCR4 to the degradative pathway. It is involved in the negative regulation of MAVS-dependent cellular antiviral responses. ITCH is involved in the regulation of apoptosis and reactive oxygen species levels through the ubiquitination and proteasomal degradation of TXNIP. It mediates the antiapoptotic activity of epidermal growth factor through the ubiquitination and proteasomal degradation of p15 BID. Defects in ITCH are the cause of syndromic multisystem autoimmune disease (SMAD).

Other Names:

E3 ubiquitin-protein ligase Itchy homolog, Atrophin-1-interacting protein 4, AIP4, NFE2-associated polypeptide 1, NAPP1

Source and Purity:

Rabbit polyclonal antibodies were produced by immunizing animals with a GST-fusion protein containing the N-terminal region of human ITCH. Antibodies were purified by affinity purification using immunogen.

Storage Buffer and Condition:

Supplied in 1 x PBS (pH 7.4), 100 ug/ml BSA, 40% Glycerol, 0.01% NaN₃. Store at -20 °C. Stable for 6 months from date of receipt.

Species Specificity:

Human

Tested Applications:

WB: 1:500-1:1,000 (detect endogenous protein*)

*: The apparent protein size on WB may be different from the calculated M.W. due to modifications.

Product Data:

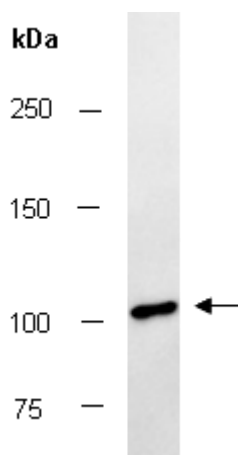


Fig 1. Western blot of total cell extracts from human HeLa, using Ab (R0951-1) at RT for 2 h.