



Order: (888)-282-5810 (Phone)  
(818)-707-0392 (Fax)  
[order@abiocode.com](mailto:order@abiocode.com)  
Web: [www.Abiocode.com](http://www.Abiocode.com)

---

## **SMAD6 (M) Antibody, Rabbit Polyclonal**

**Cat#: R1168-1**

**Quantity: 100 ul**

**Predicted | Observed MW: 53 | 60 kDa**

**Lot#: Refer to vial**

**Application: WB**

**Uniprot ID: O43541**

### **Background:**

Mothers against decapentaplegic homolog 6 (SMAD6) belongs to the dwarfin/SMAD family. SMAD6 is an antagonist of signaling by TGF-beta (transforming growth factor) type 1 receptor superfamily members; it has been shown to inhibit selectively BMP (bone morphogenetic proteins) signaling by competing with the co-SMAD SMAD4 for receptor-activated SMAD1. SMAD6 is an inhibitory SMAD (I-SMAD) or antagonistic SMAD. Binds to regulatory elements in target promoter regions.

### **Other Names:**

Mothers against decapentaplegic homolog 6, MAD homolog 6, Mothers against DPP homolog 6, SMAD family member 6, SMAD 6, Smad6, hSMAD6, MADH6

### **Source and Purity:**

Rabbit polyclonal antibodies were produced by immunizing animals with a GST-fusion protein containing the middle region of human SMAD6. Antibodies were purified by affinity purification using immunogen.

### **Storage Buffer and Condition:**

Supplied in 1 x PBS (pH 7.4), 100 ug/ml BSA, 40% Glycerol, 0.01% NaN<sub>3</sub>. Store at -20 °C. Stable for 6 months from date of receipt.

### **Species Specificity:**

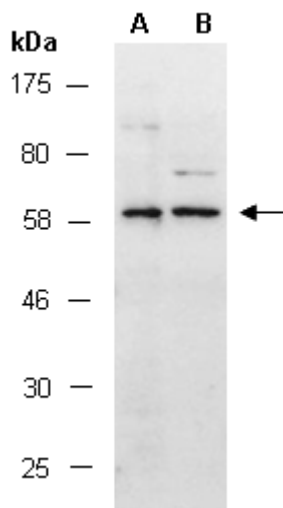
Human

### **Tested Applications:**

WB: 1:500-1:1,000 (detect endogenous protein\*)

\*: The apparent protein size on WB may be different from the calculated M.W. due to modifications.

**Product Data:**



**Fig 1.** Western blot of total cell extracts from (A) human HeLa and (B) human Jurkat, using Ab (R1168-1) at RT for 2 h.