



Order: (888)-282-5810 (Phone)  
(818)-707-0392 (Fax)  
[order@abiocode.com](mailto:order@abiocode.com)  
Web: [www.Abiocode.com](http://www.Abiocode.com)

---

## **CHEK1 (C) Antibody, Rabbit Polyclonal**

**Cat#: R1631-2**

**Quantity: 100 ul**

**Predicted | Observed MW: 54 | 60 kDa**

**Lot#: Refer to vial**

**Application: WB**

**Uniprot ID: O14757**

### **Background:**

Serine/threonine-protein kinase Chk1 (CHEK1) belongs to the CAMK Ser/Thr protein kinase family. CHEK1 is required for checkpoint mediated cell cycle arrest in response to DNA damage or the presence of unreplicated DNA. CHEK1 also acts to integrate signals from ATM and ATR, two cell cycle proteins involved in DNA damage responses, that also associate with chromatin in meiotic prophase I. Phosphorylation of CDC25A protein phosphatase by CHEK1 is required for cells to delay cell cycle progression in response to double-strand DNA breaks.

### **Other Names:**

Serine/threonine-protein kinase Chk1, CHK1, CHK1 checkpoint homolog, Cell cycle checkpoint kinase, Checkpoint kinase-1

### **Source and Purity:**

Rabbit polyclonal antibodies were produced by immunizing animals with a GST-fusion protein containing the C-terminal region of human CHEK1. Antibodies were purified by affinity purification using immunogen.

### **Storage Buffer and Condition:**

Supplied in 1 x PBS (pH 7.4), 100 ug/ml BSA, 40% Glycerol, 0.01% NaN<sub>3</sub>. Store at -20 °C. Stable for 6 months from date of receipt.

### **Species Specificity:**

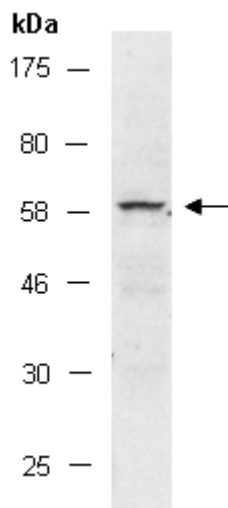
Human

### **Tested Applications:**

WB: 1:500-1:1,000 (detect endogenous protein\*)

\*: The apparent protein size on WB may be different from the calculated M.W. due to modifications.

**Product Data:**



**Fig 1.** Western blot of total cell extracts from human Jurkat, using Ab (R1631-2) at RT for 2 h.