



Order: (888)-282-5810 (Phone)
(818)-707-0392 (Fax)
order@abiocode.com
Web: www.Abiocode.com

MMP27 (C) Antibody, Rabbit Polyclonal

Cat#: R0709-2

Quantity: 100 ul

Predicted | Observed MW: 59 | 49 kDa

Lot#: Refer to vial

Application: WB

Uniprot ID: Q9H306

Background:

Matrix metalloproteinase-27 (MMP27) belongs to the peptidase M10A family. Matrix metalloproteinases (MMPs) degrade protein components of the extracellular matrix such as fibronectin, laminin, gelatins and/or collagens. MMPs are secreted by tumor cells themselves or by surrounding stromal cells stimulated by the nearby tumor. Synthetic or natural inhibitors of MMPs result in inhibition of metastasis, while up-regulation of MMPs leads to enhanced cancer cell invasion.

Other Names:

Matrix metalloproteinase-27, MMP-27

Source and Purity:

Rabbit polyclonal antibodies were produced by immunizing animals with a GST-fusion protein containing the C-terminal region of human MMP27. Antibodies were purified by affinity purification using immunogen.

Storage Buffer and Condition:

Supplied in 1 x PBS (pH 7.4), 100 ug/ml BSA, 40% Glycerol, 0.01% NaN₃. Store at -20 °C. Stable for 6 months from date of receipt.

Species Specificity:

Human, Mouse

Tested Applications:

WB: 1:500-1:2,000 (detect endogenous protein*)

*: The apparent protein size on WB may be different from the calculated M.W. due to modifications.

Product Data:

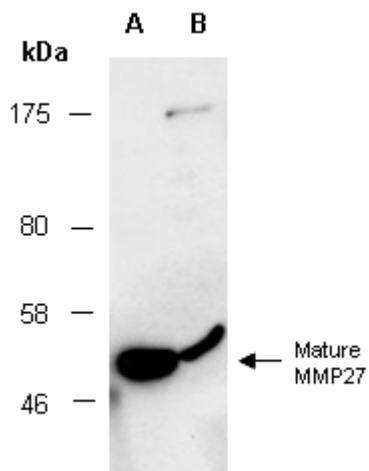


Fig 1. Western blot of total cell extracts from (A) mouse brain and (B) human AF10, using Ab (R0709-2) at RT for 2 h.