



Order: (888)-282-5810 (Phone)
(818)-707-0392 (Fax)
order@abiocode.com
Web: www.Abiocode.com

ATP11A (M2) Antibody, Rabbit Polyclonal

Cat#: R0875-2

Quantity: 100 ul

Predicted | Observed MW: 130 kDa

Lot#: Refer to vial

Application: WB

Uniprot ID: P98196

Background:

Probable phospholipid-transporting ATPase IH (ATP11A) is a multi-membrane protein that belongs to an extended family of adenosine triphosphate-binding cassette transporters that confer multi-drug resistance to cancer cells. ATP11A may be a useful predictive marker of metastasis in colorectal cancer patients.

Other Names:

Probable phospholipid-transporting ATPase IH, ATPase IS, ATPase class VI type 11A, ATPIH, ATPIS, KIAA1021

Source and Purity:

Rabbit polyclonal antibodies were produced by immunizing animals with a GST-fusion protein containing the middle region of human ATP11A. Antibodies were purified by affinity purification using immunogen.

Storage Buffer and Condition:

Supplied in 1 x PBS (pH 7.4), 100 ug/ml BSA, 40% Glycerol, 0.01% NaN₃. Store at -20 °C. Stable for 6 months from date of receipt.

Species Specificity:

Human

Tested Applications:

WB: 1:500-1:2,000 (detect endogenous protein*)

*: The apparent protein size on WB may be different from the calculated M.W. due to modifications.

Product Data:

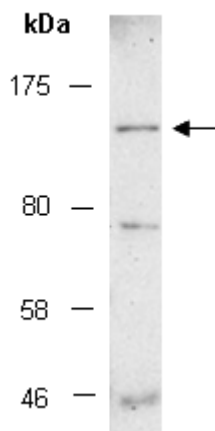


Fig 1. Western blot of total cell extracts from human HeLa using Ab (R0875-2) at RT for 2 h.