



Order: (888)-282-5810 (Phone)
(818)-707-0392 (Fax)
order@abiocode.com
Web: www.Abiocode.com

SHC3 (C) Antibody, Rabbit Polyclonal

Cat#: R1175-2

Quantity: 100 ul

Predicted | Observed MW: 64 kDa

Lot#: Refer to vial

Application: WB

Uniprot ID: Q92529

Background:

SHC-transforming protein 3 (SHC3) is a signaling adapter that couples activated growth factor receptors to signaling pathway in neurons. SHC3 is involved in the signal transduction pathways of neurotrophin-activated Trk receptors in cortical neurons. SHC3 can bind activated TrkB receptor following the stimulation with brain-derived neurotrophic factor (BDNF), which is the most abundant neurotrophin in the brain.

Other Names:

SHC-transforming protein 3, Neuronal Shc, N-Shc, Protein Rai, SHC-transforming protein C, Src homology 2 domain-containing-transforming protein C3, SH2 domain protein C3, NSHC, SHCC

Source and Purity:

Rabbit polyclonal antibodies were produced by immunizing animals with a GST-fusion protein containing the C-terminal region of human SHC3. Antibodies were purified by affinity purification using immunogen.

Storage Buffer and Condition:

Supplied in 1 x PBS (pH 7.4), 100 ug/ml BSA, 40% Glycerol, 0.01% NaN₃. Store at -20 °C. Stable for 6 months from date of receipt.

Species Specificity:

Human, Mouse

Tested Applications:

WB: 1:500-1:2,000 (detect endogenous protein*)

*: The apparent protein size on WB may be different from the calculated M.W. due to modifications.

Product Data:

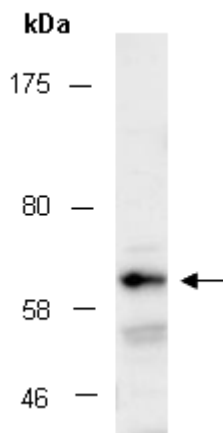


Fig 1. Western blot of total cell extracts from mouse brain, using Ab (R1175-2) at RT for 2 h.