



Order: (888)-282-5810 (Phone)
(818)-707-0392 (Fax)
order@abiocode.com
Web: www.Abiocode.com

CBL (vPair™) Antibodies

Cat#: R0896-vp

Lot#: Refer to vial

Predicted | Observed MW: 100 | 120 kDa

Uniprot ID: P22681

Application: WB

Quantity: 50 ul CBL (M) (R0896-2) Rabbit Polyclonal Antibody &
50 ul CBL (C) (R0896-3) Rabbit Polyclonal Antibody

Product Introduction:

vPair™ antibodies represent a pair of fully characterized antibodies that recognize two different regions of a target protein. The product is developed by Abiocode to address whether the signal observed truly represents the protein of interest, an often encountered issue in antibody-based assays. The use of a pair of fully characterized vPair™ antibodies in the same assay can validate signal specificity since vPair™ antibodies recognize two independent epitopes of the same protein. Different sets of vPair™ antibodies are developed at Abiocode to work with specific applications, including antibody arrays, Western blot, IP-Western, ChIP, IHC, and FACS.

Background:

E3 ubiquitin-protein ligase CBL is an adapter protein that functions as a negative regulator of many signaling pathways that are triggered by activation of cell surface receptors. It acts as an E3 ubiquitin-protein ligase, which accepts ubiquitin from specific E2 ubiquitin-conjugating enzymes, and then transfers it to substrates promoting their degradation by the proteasome. CBL plays an important role in the regulation of osteoblast differentiation and apoptosis and is essential for osteoclastic bone resorption. Defects in CBL are the cause of Noonan syndrome-like disorder with or without juvenile myelomonocytic leukemia (NSLL).

Other Names:

E3 ubiquitin-protein ligase CBL, Casitas B-lineage lymphoma proto-oncogene, Proto-oncogene c-Cbl, RING finger protein 55, Signal transduction protein CBL, CBL2, RNF55

Source and Purity:

Rabbit polyclonal antibodies were produced by immunizing animals with a GST-fusion protein containing either the middle [CBL (M) (R0896-2)] or the C-terminal [CBL (C) (R0896-3)] region of human CBL. Antibodies were purified by affinity purification using immunogen.

Storage Buffer and Condition:

Supplied in 1 x PBS (pH 7.4), 100 ug/ml BSA, 40% Glycerol, 0.01% NaN₃. Store at -20 °C. Stable for 6 months from date of receipt.

Species Specificity:

Human

Tested Applications:

WB: 1:500-1:3,000 (detect endogenous protein*)

*: The apparent protein size on WB may be different from the calculated M.W. due to modifications.

Product Data:

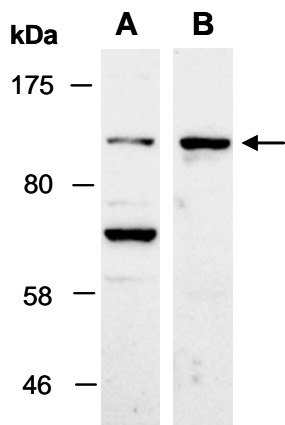


Fig 1. Western blot of total cell extracts from human MCF7, using 2 independent Abs against 2 distinct regions of human CBL [A: R0896-2, CBL (M); B: R0896-3, CBL (C)] at RT for 2 h.