



Order: (888)-282-5810 (Phone)  
(818)-707-0392 (Fax)  
[order@abiocode.com](mailto:order@abiocode.com)  
Web: [www.Abiocode.com](http://www.Abiocode.com)

---

## **PRKCA (M1) Antibody, Rabbit Polyclonal**

**Cat#: R1681-4**

**Quantity: 100 ul**

**Predicted | Observed MW: 77 kDa**

**Lot#: Refer to vial**

**Application: WB**

**Uniprot ID: P17252**

### **Background:**

Protein kinase C alpha type (PRKCA) is a peripheral membrane protein belonging to the Ser/Thr protein kinase family. PRKCA is a calcium-activated, phospholipid- and diacylglycerol (DAG)-dependent serine/threonine-protein kinase involved in positive and negative regulation of cell proliferation, apoptosis, differentiation, migration and adhesion, tumorigenesis, cardiac hypertrophy, angiogenesis, platelet function and inflammation, by directly phosphorylating targets such as RAF1, BCL2, CSPG4, TNNT2/CTNT, or activating signaling cascade involving MAPK1/3 (ERK1/2) and RAP1GAP.

### **Other Names:**

Protein kinase C alpha type, PKC-A, PKC-alpha, PKCA, PRKACA

### **Source and Purity:**

Rabbit polyclonal antibodies were produced by immunizing animals with a GST-fusion protein containing the middle region of human PRKCA. Antibodies were purified by affinity purification using immunogen.

### **Storage Buffer and Condition:**

Supplied in 1 x PBS (pH 7.4), 100 ug/ml BSA, 40% Glycerol, 0.01% NaN<sub>3</sub>. Store at -20 °C. Stable for 6 months from date of receipt.

### **Species Specificity:**

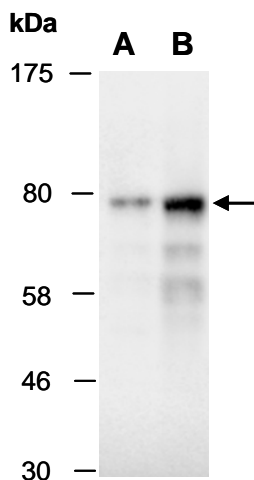
Human, Mouse

### **Tested Applications:**

WB: 1:1000-1:3,000 (detect endogenous protein\*)

\*: The apparent protein size on WB may be different from the calculated M.W. due to modifications.

**Product Data:**



**Fig 1.** Western blot of total cell extracts from (A) human K562, (B) mouse brain, using Ab (R1681-4) at RT for 2 h.