



Order: (888)-282-5810 (Phone)
(818)-707-0392 (Fax)
order@abiocode.com
Web: www.Abiocode.com

KDM2A (N) Antibody, Rabbit Polyclonal

Cat#: R0913-1a

Quantity: 100 ul

Predicted M.W.: 133, 97, 90 kDa

Lot#: Refer to vial

Application: WB

Uniprot ID: Q9Y2K7

Background:

Lysine-specific demethylase 2A (KDM2A) is a histone demethylase belonging to the JHDM1 histone demethylase family. KDM2A specifically demethylates 'Lys-36' of histone H3, thereby playing a central role in histone code. It preferentially demethylates dimethylated H3 'Lys-36' residue while it has weak or no activity for mono- and tri-methylated H3 'Lys-36'. KDM2A is required to maintain the heterochromatic state. It associates with centromeres and represses transcription of small non-coding RNAs encoded by the clusters of satellite repeats at the centromere. KDM2A is required to sustain centromeric integrity and genomic stability, particularly during mitosis.

Other Names:

Lysine-specific demethylase 2A, CXXC-type zinc finger protein 8, F-box and leucine-rich repeat protein 11, F-box protein FBL7, F-box protein Lilina, F-box/LRR-repeat protein 11, JmjC domain-containing histone demethylation protein 1A, [Histone-H3]-lysine-36 demethylase 1A, CXXC8, FBL7, FBXL11, JHDM1A, KIAA1004

Source and Purity:

Rabbit polyclonal antibodies were produced by immunizing animals with a GST-fusion protein containing the N-terminal region of human KDM2A. Antibodies were purified by affinity purification using immunogen.

Storage Buffer and Condition:

Supplied in 1 x PBS (pH 7.4), 100 ug/ml BSA, 40% Glycerol, 0.01% NaN₃. Store at -20 °C. Stable for 6 months from date of receipt.

Species Specificity:

Human

Tested Applications:

WB: 1:500-1:2,000 (detect endogenous protein*)

*: The apparent protein size on WB may be different from the calculated M.W. due to modifications.

**For research use only. Not for therapeutic or diagnostic purposes.
Abiocode, Inc., 29397 Agoura Rd., Ste 106, Agoura Hills, CA 91301**

Product Data:

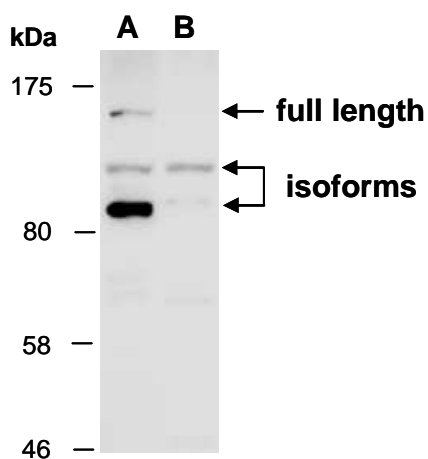


Fig 1. Western blot of total cell extracts from (A) human HeLa, (B) human Jurkat, using Ab (R0913-1a) at RT for 2 h.